

# JVC



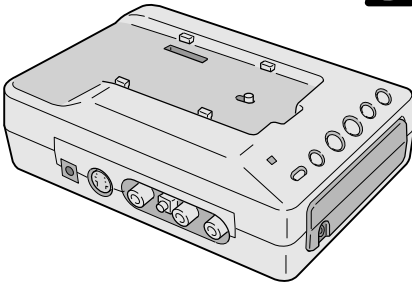
## JLIP VIDEO CAPTURE DOCKING STATION BASE DE MONTAGE A CAPTURE VIDEO JLIP

# GV-DS2

ENGLISH

FRANÇAIS

### JLIP



## INSTRUCTIONS MODE D'EMPLOI

**For Customer Use:**

Enter below the Model No. and Serial No. which is located on the bottom of cabinet. Retain this information for future reference.

Model No. \_\_\_\_\_

Serial No. \_\_\_\_\_

**Dear Customer,**

Thank you for purchasing this VIDEO CAPTURE DOCKING STATION. Before use, please read the safety information and precautions contained in the following pages to ensure safe use of this product.

**Using This Instruction Manual**

- All major sections and subsections are listed in the Table Of Contents (☞ pg. 7 – 9).
- Notes appear after most subsections. Be sure to read these as well.
- Basic and advanced features/operation are separated for easier reference.

**It is recommended that you . . .**

.... refer to “Controls and Connectors” (☞ pg. 12) and familiarize yourself with connector locations before use.

.... read thoroughly the Safety Precautions and Safety Instructions that follow. They contain extremely important information regarding the safe use of your new VIDEO CAPTURE DOCKING STATION.

You are recommended to carefully read the cautions on pg. 5 and 6 before use.

**Declaration of Conformity**

Model Number : GV-DS2U  
 Trade Name : JVC  
 Responsible party : US JVC CORP.  
 Address : 41 Slater Drive, Elmwood Park,  
 N. J. 07407

Telephone Number : (201) 794–3900

This device complies with Part 15 of FCC Rules.

Operation is subject to the following two conditions:

- (1) This device may not cause harmful interference, and
- (2) this device must accept any interference received, including interference that may cause undesired operation.

Change or modifications not approved by the party responsible for compliance could void the user's authority to operate the equipment. This equipment has been tested and found to comply with the limits for a Class B digital device, pursuant to Part 15 of the FCC Rules. These limits are designed to provide reasonable protection against harmful interference in a residential installation. This equipment generates, uses, and can radiate radio frequency energy and, if not installed and used in accordance with the instructions, may cause harmful interference to radio communications.

However, there is no guarantee that interference will not occur in a particular installation.

If this equipment does cause harmful interference to radio or television reception, which can be determined by turning the equipment off and on, the user is encouraged to try to correct the interference by one or more of the following measures:

- Reorient or relocate the receiving antenna.
- Increase the separation between the equipment and receiver.
- Connect the equipment into an outlet on a circuit different from that to which the receiver is connected.
- Consult the dealer or an experienced radio/TV technician for help.

# SAFETY PRECAUTIONS

**CAUTION:**

TO REDUCE THE RISK OF FIRE, DO NOT REMOVE COVER (OR BACK). NO USER-SERVICEABLE PARTS INSIDE. REFER SERVICING TO QUALIFIED SERVICE PERSONNEL.

**WARNING:**  
**TO PREVENT FIRE OR SHOCK HAZARD, DO NOT EXPOSE THIS UNIT TO RAIN OR MOISTURE.**

**NOTE:**

*The rating plate (serial number plate) and safety caution are on the bottom of the VIDEO CAPTURE DOCKING STATION.*

This Class B digital apparatus meets all requirements of the Canadian Interference – Causing Equipment Regulations.

“Cet appareil numérique de la classe B respecte toutes les exigences du Règlement sur le matériel brouilleur du Canada.”

When using the Video Capture Docking Station, use the AA-V90U AC Adapter/Charger (optional or provided with the camcorder).

# IMPORTANT PRODUCT SAFETY INSTRUCTIONS

Electrical energy can perform many useful functions. But improper use can result in potential electrical shock or fire hazards. This product has been engineered and manufactured to assure your personal safety. In order not to defeat the built-in safeguards, observe the following basic rules for its installation, use and servicing.

## ATTENTION:

Follow and obey all warnings and instructions marked on your product and its operating instructions. For your safety, please read all the safety and operating instructions before you operate this product and keep this manual for future reference.

## INSTALLATION

### 1. Grounding or Polarization

Your product may be equipped with a polarized alternating-current line plug (a plug having one blade wider than the other). This plug will fit into the power outlet only one way. This is a safety feature. If you are unable to insert the plug fully into the outlet, try reversing the plug. If the plug should still fail to fit, contact your electrician to replace your obsolete outlet. Do not defeat the safety purpose of the polarized plug.

### 2. Power Sources

Operate your product only from the type of power source indicated on the marking label. If you are not sure of the type of power supply to your home, consult your product dealer or local power company. If your product is intended to operate from battery power, or other sources, refer to the operating instructions.

### 3. Overloading

Do not overload wall outlets, extension cords, or integral convenience receptacles as this can result in a risk of fire or electric shock.

### 4. Power Cord Protection

Power supply cords should be routed so that they are not likely to be walked on or pinched by items placed upon or against them, paying particular attention to cords at plugs, convenience receptacles, and the point where they exit from the product.

### 5. Ventilation

Slots and openings in the cabinet are provided for ventilation. To ensure reliable operation of the product and to protect it from overheating, these openings must not be blocked or covered.

- Do not block the openings by placing the product on a bed, sofa, rug or other similar surface.
- Do not place the product in a built-in installation such as a bookcase or rack unless proper ventilation is provided or the manufacturer's instructions have been adhered to.

### 6. Wall or Ceiling Mounting

The product should be mounted to a wall or ceiling only as recommended by the manufacturer.

## ANTENNA INSTALLATION INSTRUCTIONS

### 1. Outdoor Antenna Grounding

If an outside antenna or cable system is connected to the product, be sure the antenna or cable system is grounded so as to provide some protection against voltage surges and built-up static charges. Article 810 of the National Electrical Code, ANSI/NFPA 70, provides information with regard to proper grounding of the mast and supporting structure, grounding of the lead-in wire to an antenna discharge unit, size of grounding conductors, location of antenna discharge unit, connection to grounding electrodes, and requirements for the grounding electrode.

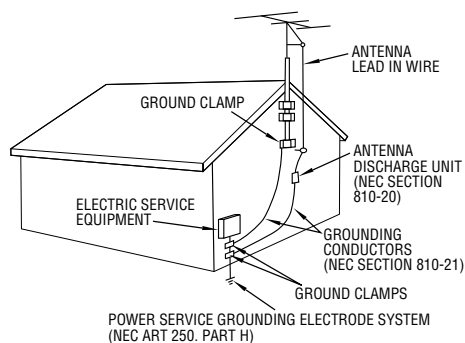
### 2. Lightning

For added protection for this product during a lightning storm, or when it is left unattended and unused for long periods of time, unplug it from the wall outlet and disconnect the antenna or cable system. This will prevent damage to the product due to lightning and power-line surges.

### 3. Power Lines

An outside antenna system should not be located in the vicinity of overhead power lines or other electric light or power circuits, or where it can fall into such power lines or circuits. When installing an outside antenna system, extreme care should be taken to keep from touching such power lines or circuits as contact with them might be fatal.

### EXAMPLE OF ANTENNA GROUNDING AS PER NATIONAL ELECTRICAL CODE, ANSI/NFPA 70



NEC – NATIONAL ELECTRICAL CODE

## USE

### 1. Accessories

#### To avoid personal injury:

- Do not place this product on an unstable cart, stand, tripod, bracket or table. It may fall, causing serious injury to a child or adult, and serious damage to the product.
- Use only with a cart, stand, tripod, bracket, or table recommended by the manufacturer or sold with the product.
- Use a mounting accessory recommended by the manufacturer and follow the manufacturer's instructions for any mounting of the product.
- Do not try to roll a cart with small casters across thresholds or deep-pile carpets.

### 2. Product and Cart Combination

A product and cart combination should be moved with care. Quick stops, excessive force, and uneven surfaces may cause the product and cart combination to overturn.

### 3. Water and Moisture

Do not use this product near water—for example, near a bath tub, wash bowl, kitchen sink or laundry tub, in a wet basement, or near a swimming pool and the like.

PORTABLE CART WARNING  
(Symbol provided by RETAC)



### 4. Object and Liquid Entry

Never push objects of any kind into this product through openings as they may touch dangerous voltage points or short-out parts that could result in a fire or electric shock. Never spill liquid of any kind on the product.

### 5. Attachments

Do not use attachments not recommended by the manufacturer of this product as they may cause hazards.

### 6. Cleaning

Unplug this product from the wall outlet before cleaning. Do not use liquid cleaners or aerosol cleaners. Use a damp cloth for cleaning.

### 7. Heat

The product should be situated away from heat sources such as radiators, heat registers, stoves, or other products (including amplifiers) that produce heat.

## SERVICING

### 1. Servicing

If your product is not operating correctly or exhibits a marked change in performance and you are unable to restore normal operation by following the detailed procedure in its operating instructions, do not attempt to service it yourself as opening or removing covers may expose you to dangerous voltage or other hazards. Refer all servicing to qualified service personnel.

### 2. Damage Requiring Service

Unplug this product from the wall outlet and refer servicing to qualified service personnel under the following conditions:

- When the power supply cord or plug is damaged.
- If liquid has been spilled, or objects have fallen into the product.
- If the product has been exposed to rain or water.
- If the product does not operate normally by following the operating instructions. Adjust only those controls that are covered by the operating instructions as an improper adjustment of other controls may result in damage and will often require extensive work by a qualified technician to restore the product to its normal operation.
- If the product has been dropped or damaged in any way.
- When the product exhibits a distinct change in performance—this indicates a need for service.

### 3. Replacement Parts

When replacement parts are required, be sure the service technician has used replacement parts specified by the manufacturer or have the same characteristics as the original part. Unauthorized substitutions may result in fire, electric shock or other hazards.

### 4. Safety Check

Upon completion of any service or repairs to this product, ask the service technician to perform safety checks to determine that the product is in safe operating condition.

**DO NOT** attempt to insert foreign objects into the connectors, as this can lead to electric shock or fire. If an object is accidentally inserted, unplug it and contact your JVC dealer. Be especially careful with children.

If during use you notice that the VIDEO CAPTURE DOCKING STATION is damaged, unplug it and contact your JVC dealer. Use of the VIDEO CAPTURE DOCKING STATION under these conditions can lead to fire or electric shock.

**DO NOT** attempt to repair or modify the VIDEO CAPTURE DOCKING STATION. Doing so may result in malfunctions or injury. If a problem occurs, contact your JVC dealer.

---

Failure to heed the following precautions may result in damage to the VIDEO CAPTURE DOCKING STATION.

1. **DO NOT** place the VIDEO CAPTURE DOCKING STATION . . .
  - .... in an environment prone to extreme temperatures or humidity.
  - .... in direct sunlight.
  - .... in a dusty environment.
  - .... in an environment where strong magnetic fields are generated.
  - .... on a surface that is unstable or subject to vibration. The unit may fall, causing injury.
2. **DO NOT** place heavy objects on the VIDEO CAPTURE DOCKING STATION.
3. **DO NOT** place anything which might spill on top of the VIDEO CAPTURE DOCKING STATION.
4. **AVOID** violent shocks to the VIDEO CAPTURE DOCKING STATION during transport.
5. **DO NOT** leave the VIDEO CAPTURE DOCKING STATION plugged in when the unit is not in use.
6. **DO NOT** use accessories other than those designated in the instructions. Use of others can lead to fire or electric shock.
7. **DO NOT** connect devices to the VIDEO CAPTURE DOCKING STATION other than those designated in the instructions. Use of others can lead to malfunctions.

---

### How to handle a CD-ROM

- Take care not to soil or scratch the mirror surface (opposite to the printed surface). Do not write anything or put a sticker on either the front or back surface. If the CD-ROM gets dirty, gently wipe it with a soft cloth outward from the center hole using a circular motion.
  - Do not use conventional disc cleaners or cleaning spray.
  - Do not bend the CD-ROM or touch its mirror surface.
  - Do not store your CD-ROM in a dusty, hot or humid environment. Keep it away from direct sunlight.
- 

### MAINTENANCE

If the inside of the VIDEO CAPTURE DOCKING STATION is left dusty for a long time, its use can lead to fire or malfunction. Consult your JVC dealer on cleaning.

#### CAUTION:

Changes or modifications not approved by JVC could void user's authority to operate the equipment.

- **The Readme.TXT file provides additional information for setup and information that is not included in the instruction manual. Please read the file before installing the provided software program.**
- **You can find the latest information (in English) on the provided software program at our www server.**  
<www><http://www.jvc-victor.co.jp/index-e.html>

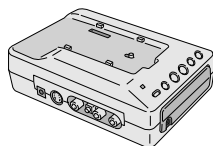
<i>MAJOR FEATURES</i>	<b>10</b>
<i>CONTROLS AND CONNECTORS</i>	<b>12</b>
<i>CAMCORDER ATTACHMENT</i>	<b>13</b>
<i>CONNECTIONS</i>	<b>14</b>
<b>JLIP VIDEO CAPTURE SOFTWARE SECTION .....</b>	<b>17</b>
<i>GETTING STARTED</i>	<b>18</b>
<i>INSTALLATION (JLIP Video Capture Software)</i>	<b>19</b>
<i>OPEN &amp; CLOSE (Basic Operation Procedure)</i>	<b>20</b>
Preparation .....	20
How to close the program .....	21
<i>INITIALIZATION</i>	<b>22</b>
Initializing JLIP .....	22
Select units .....	23
<i>HOW THE DESKTOP WORKS</i>	<b>24</b>
Main desktop window .....	24
Menu bar .....	26
Each pulldown menu is configured as follows .....	26
<i>VIDEO CAPTURE</i>	<b>28</b>
Capturing video images .....	28
Step by step capture .....	29
Automatic capture .....	30
Program capture .....	30
Interval capture .....	32
<i>PICTURE FORMAT SETTING</i>	<b>33</b>
Selecting a picture format .....	33
<i>ADDITIONAL OPERATIONS</i>	<b>34</b>
Counter value change .....	34
Counter reset .....	34
Delete index image and full image .....	35
Change ID .....	35

<b><i>SAVE PICTURE</i></b>	<b>36</b>
Create new folder .....	36
Saving .....	36
Open index .....	37
Save the full image data .....	37
<b><i>JLIP VIDEO PRODUCER SOFTWARE</i></b>	<b>38</b>
Using JLIP video producer software data .....	38
How to store JLIP video producer software data .....	39
<b><i>TROUBLESHOOTING</i></b>	<b>40</b>
<b><i>LIST OF ERROR MESSAGES</i></b>	<b>42</b>
<b>JLIP VIDEO PRODUCER SOFTWARE SECTION .....</b>	<b>45</b>
<b><i>GETTING STARTED</i></b>	<b>46</b>
<b><i>INSTALLING (JLIP Video Producer Software)</i></b>	<b>47</b>
<b><i>STARTING JLIP VIDEO PRODUCER SOFTWARE</i></b>	<b>48</b>
<b><i>VIDEO PRODUCER WINDOW BUTTONS AND DISPLAYS</i></b>	<b>50</b>
<b><i>BASIC OPERATIONS</i></b>	<b>52</b>
Operating camcorder .....	52
Setting in/out points .....	52
Playing back one programmed scene .....	53
Playing back all programmed scenes .....	53
Dubbing .....	54
Saving the program list on hard disk .....	55
Opening a saved file .....	56
Correcting and cutting the programmed counter date .....	56
Overwriting the file .....	57
Selecting a P.AE/Effect .....	58
Selecting a Fade/Wipe Effect .....	58
<b><i>VIDEO PRINTER WINDOW BUTTONS AND DISPLAYS</i></b>	<b>60</b>

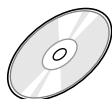


<b>VIDEO PRINTER OPERATION (GV-PT1U)</b>	<b>62</b>
<b>Printing</b> .....	62
<b>Adjusting picture equalization</b> .....	63
<b>Quitting the "Video Printer" window</b> .....	63
<b>Quitting the JLIP VIDEO PRODUCER window</b> .....	63
<b>VIDEO PRINTER OPERATION (GV-PT2U)</b>	<b>64</b>
<b>Auto capture</b> .....	64
<b>ADVANCED OPERATIONS</b>	<b>66</b>
<b>Changing ID number</b> .....	66
<b>Connecting other device during operation</b> .....	66
<b>Changing the name of the device</b> .....	67
<b>Changing the device to use while     connecting over two same type devices</b> .....	67
<b>Adjusting the gap between the stored edit-start point     in the computer and the dubbed one in the recording deck</b> .....	68
<b>Counter reset</b> .....	69
<b>When using the Video Capture Software</b> .....	69
<b>TROUBLESHOOTING</b>	<b>70</b>
<b>MAJOR SPECIFICATIONS</b>	<b>72</b>
<b>INDEX</b>	<b>73</b>

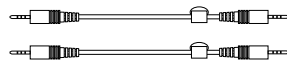
Make sure the GV-DS2U (optional) includes the following accessories:



**JLIP Video Capture  
Docking Station  
GV-DS2U**



**CD-ROM including two  
software programs:  
JLIP Video Capture and JLIP  
Video Producer software**



**3.5mm diameter 4-pole cable (x 2)**

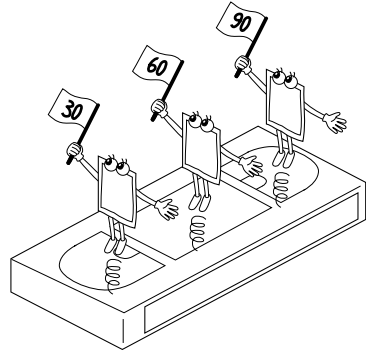


**PC Connection Cable  
(for PC/AT compatible computers)**

## Advanced Applications

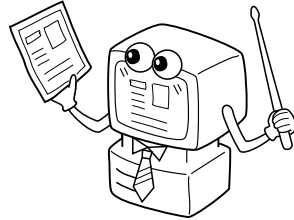
### Create title indexes for your video collection

Title index images can be captured from your favorite recordings in intervals of 30 minutes, 1 hour, 1.5 hours, etc. using the Interval Capture mode. Print the captured index images on your PC printer using the computer's Print Screen facility, then attach them to your cassettes.



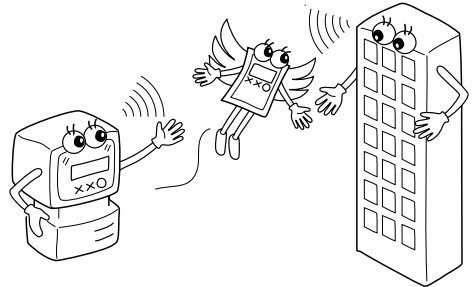
### Business presentations

Images captured from video can be incorporated into business documents to spice up your presentations.



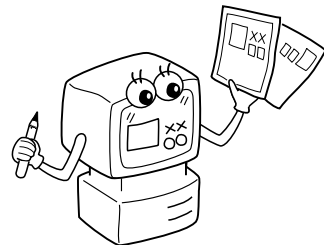
### Internet homepage

Images captured from video can be incorporated in your Internet homepage using image editing software.



### Video journal and postcards

Create your own original postcards, party invitation cards and the like or keep a video journal.



Two software programs are provided.

## JLIP Video Capture Software

(☞ pg. 14 – 43)

### JLIP Video Capture Software

This is the software described in this manual.

#### Video Capture Facility

Video images from video source units such as camcorders or VCRs can be captured as 640 x 480 still images with 16.77 million colors through the serial port (RS-232C) of a Windows®-operated computer.

#### JLIP Control Facility

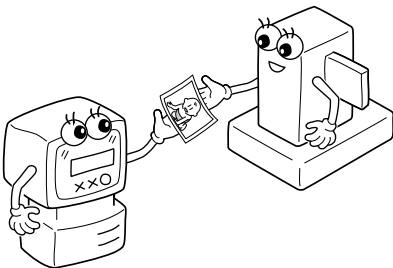
With a JLIP compatible camcorder or VCR,

- all basic video operations can be executed via the computer display;
- up to 99 images can be captured automatically with Program Video Capture (playing tape — scanning — transferring to PC)

#### Data Sharing With JLIP Video Producer Software

Data can be imported from the JLIP Video Producer Software.

Data from the Video Capture Software can also be exported to the Video Producer Software for Program Playback or Assemble Editing.



## JLIP Video Producer Software

(☞ pg. 14, 45 – 71)

### JLIP Control Facility

With a JLIP-compatible camcorder, VCR or video printer (GV-PT1U, GV-PT2U):

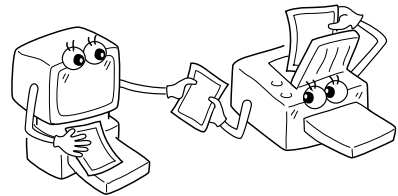
- all basic video operations can be executed on the computer display;
- allows programmed video playback (up to 99 programs) or assemble editing
- allows image adjustment on the GV-PT1U video printer
- print command can be issued to the GV-PT2U video printer

#### Data Sharing with the Video Capture Software

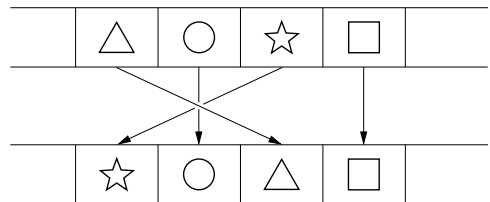
Video Capture Software data can be exported to the Video Producer Software.

#### Assemble Editing

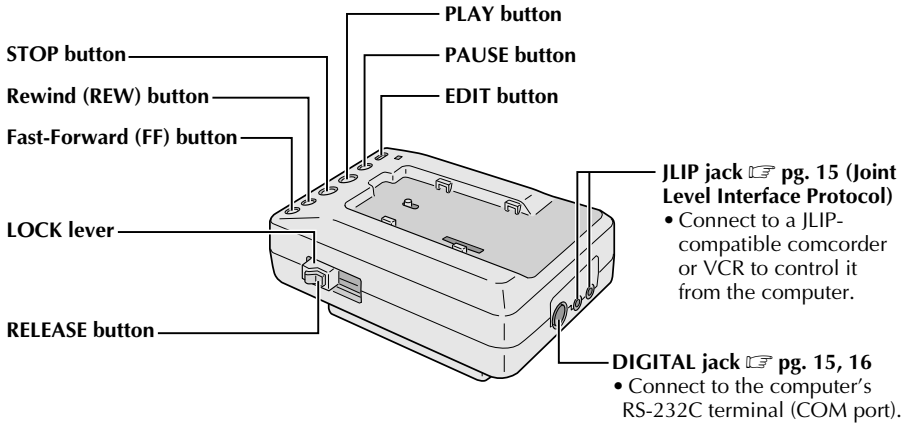
Selected scenes on a pre-recorded tape can be edited in a specified sequence.



Pre-recorded tape  
(on camcorder)



Recording tape  
(on VCR)



**Multi connector** pg. 13

- The Docking Station can be connected with the GR-DVXU through this connector. Never touch it with your hand or hit it with a hard object; if the pins are damaged, the connectors will become unusable due to contact failure.

**Charger Indicator (CHARGE)** pg. 13

**Remote control sensor**

- Receives the remote control signals for the attached Camcorder.

**S-Video output jack (S OUT)** pg. 15

- Outputs S-Video signal. (Also compatible with S, S1 and S2 connectors.)

**DC IN jack** pg. 15

**VIDEO OUT jack** pg. 15

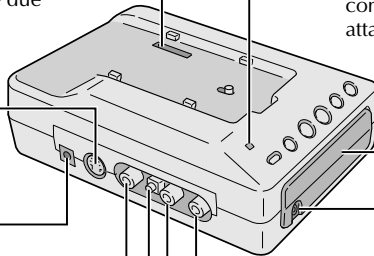
**DC OUT jack**

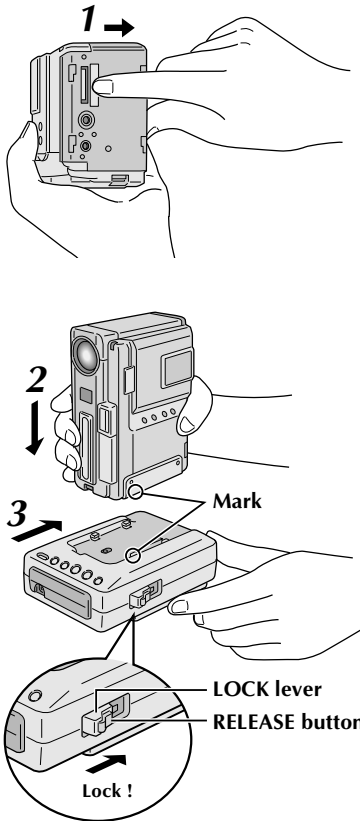
- For dealer use.

**EDIT jack** pg. 15, 16

**AUDIO OUT jack [R]** pg. 15

**AUDIO OUT jack [L]** pg. 15





Before attachment, make sure the camcorder's power is off.

### 1. OPEN COVER

Slide the Multi connector cover (MULTI) on the bottom of the camcorder in the direction of the arrow until you hear a click.

### 2. ATTACH

Attach the camcorder by aligning the mark on it with the one on the Video Capture Docking Station.

### 3. FIX

Slide the camcorder in the direction of the arrow.

### 4. LOCK

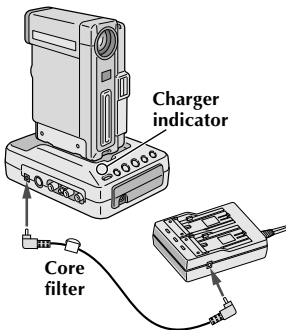
While holding the camcorder, slide the LOCK lever in the direction of the arrow.

**To remove the camcorder . . .**

... press the RELEASE button. After the LOCK lever has been released, detach the camcorder.

**NOTE :** If it is impossible to slide the lock lever, repeat steps 2 and 3.

### Charging a battery Installed in the Camcorder . . .



If you attach the camcorder with a battery installed to the Video Capture Docking Station, you can charge the battery. First make sure that the camcorder does not have a DC cord connected to it before attaching. Turn the camcorder's Power Dial to "OFF" then perform the following steps.

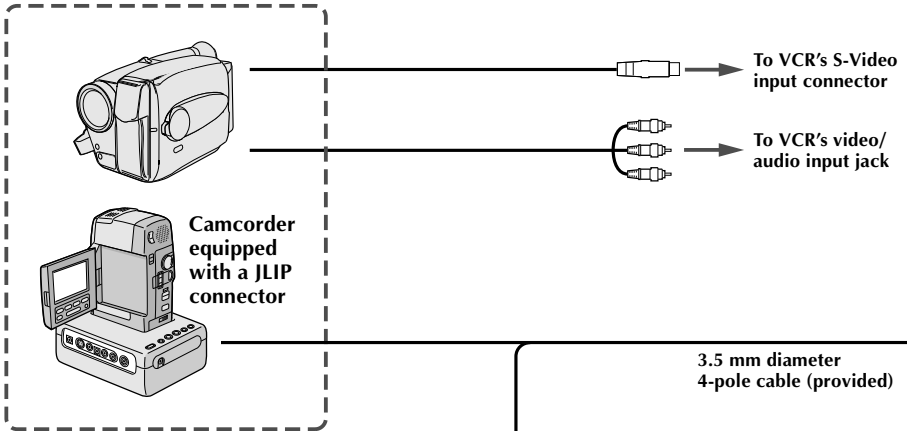
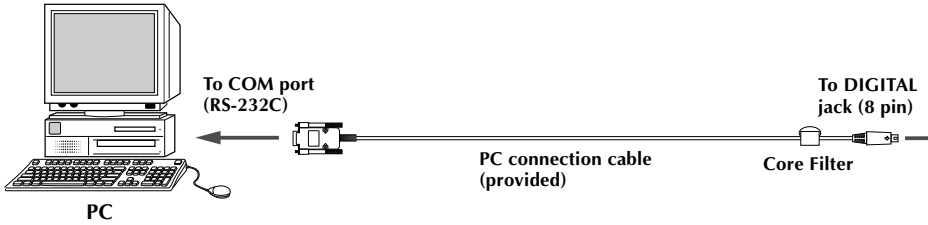
#### 1. Connect the Video Capture Docking Station to the AC Power Adapter/Charger.

- The Video Capture Docking Station does not use the camcorder's battery to function. Be sure to connect the AC Power Adapter/Charger exclusively for use with the camcorder.

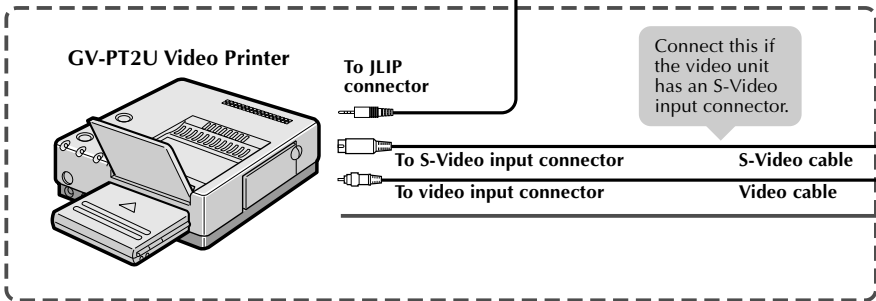
#### 2. Connect the power cord to an AC outlet.

- The Docking Station's charger indicator begins (CHARGE) blinking to indicate that the charge has begun. When it stops blinking and lights steadily, the charge is complete. It takes approx. 2 hours to charge the battery fully.

- To assure safety, make sure all units are turned off before making any connections.
- The video images will be displayed on the LCD screen of the attached GR-DVXU series camcorder. You cannot view the images on the computer screen.
- When connecting the cables (provided with this Video Capture Docking Station or with the camcorder), be sure to connect the terminals equipped with Core filters to the Video Capture Docking Station.
- When using the Video Capture Docking Station, use the AA-V90U AC Adapter/Charger (optional or provided with the camcorder).

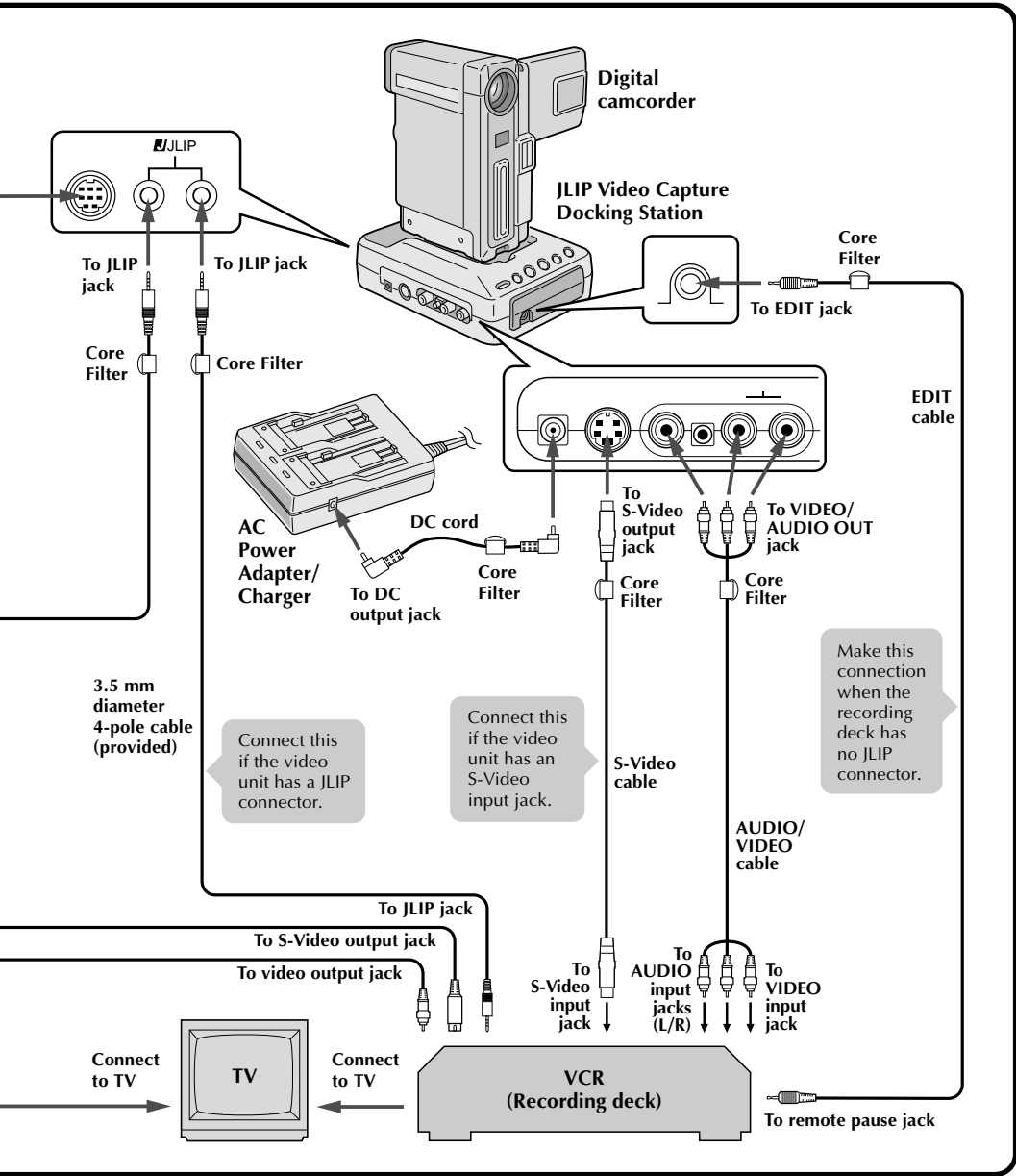


When connected with the camcorder



When connected with the Video Printer

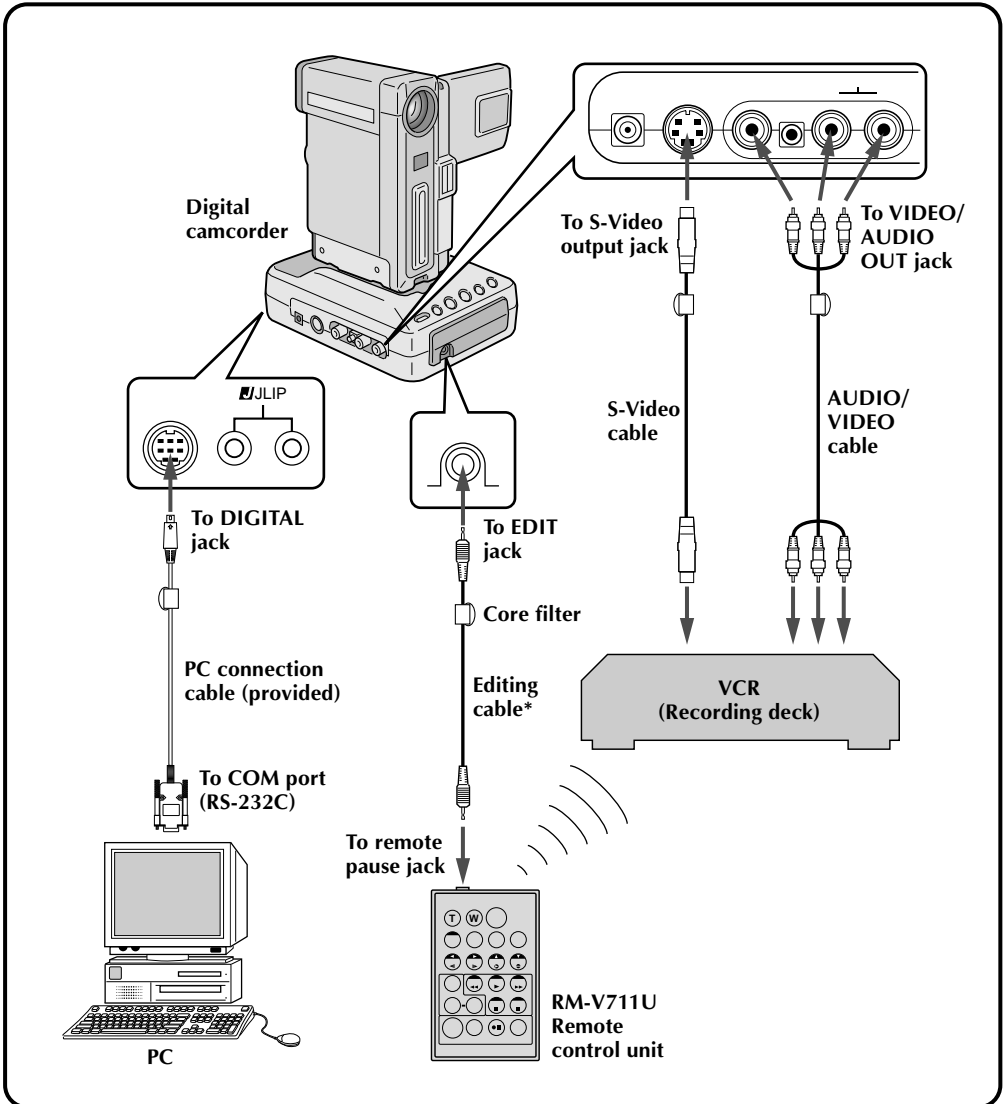
- The Video Capture Docking Station does not receive power from the battery pack installed in the camcorder or from the AC Power Adapter/Charger attached to the camcorder. Be sure to connect the AA-V90U AC Power Adapter/Charger (exclusively for the Video Capture Docking Station) to the DC input jack located on the Video Capture Docking Station.
- When connecting the Docking Station to a recording deck with neither a JLIP connector nor a remote pause jack, first make all connections except for the connection to the edit jack on pg. 14 and 15, then make the connection to the edit jack on pg. 16.



## WHEN USING A RECORDING DECK WITH NEITHER A JLIP CONNECTOR NOR A REMOTE PAUSE JACK

When using the JLIP Video Producer Software . . .

- When using a recording deck with neither a JLIP connector nor a remote pause jack, set your VCR brand using the RM-V711U remote control unit then perform editing using the RM-V711U. Also refer to pg. 61 to 64 of the camcorder's instruction manual.
- For all connections except those to the digital connector and edit jack, refer to pg. 14 and 15.



\* Use the editing cable provided with the camcorder.



# JLIP VIDEO CAPTURE SOFTWARE SECTION

<b>Operating Environment</b> .....	18
<b>Connectable Devices</b> .....	18
<b>Installation</b> .....	19
<b>Open &amp; Close</b> .....	20
<b>Initialization</b> .....	22
<b>How The Desktop Works</b> .....	24
<b>Video Capture</b> .....	28
<b>Picture Format Setting</b> .....	33
<b>Additional Operations</b> .....	34
<b>Save Picture</b> .....	36
<b>Troubleshooting</b> .....	40
<b>List of Error messages</b> .....	42

## What is video capture software ?

Video capture software is a type of application program that allows you to capture video images from camcorders and VCRs and store them in personal computers running under the Windows® operating system. These images can be transferred from the video source to the computer via a standard RS-232C communication interface. By processing the captured images with commercially available image editing software, you can create your own unique and highly personal illustrations and graphics for incorporation into everything from postcards to newsletters and Internet homepages.

## What is JLIP ?

JLIP\* stands for Joint Level Interface Protocol, a new communication protocol which allows AV units equipped with a JLIP terminal to be controlled by a personal computer.

\* **JLIP** is a registered trademark of JVC.

## Operating Environment

- Personal computer with Microsoft® Windows® 3.1 or Windows® 95
- CPU Intel DX4® or faster processor
- Minimum RAM requirement: 8 MB
- Available Hard Disk space of at least 8 MB
- Color display capable of at least 640 x 480 pixels, 256 colors  
Recommended 1024 x 768, 16.77 Mil colors
- 1 free serial transmission port, compatible with 9600 bps transmission rate, connectable to RS-232C with 9 pin serial connector.  
Recommended compatible with UART 16550A
- Mouse (Windows® compatible)
- CD-ROM drive

**Note :** An optional 9 pin serial conversion adapter is required for computers using serial communication port other than standard 9 pin.

\* Microsoft® and Windows® are either registered trademarks or trademarks of Microsoft Corporation in the United States and/or other countries.

\* Other product and company names included in this instruction manual are trademarks and/or registered trademarks of their respective holders.

## Connectable Devices

GR-DVXU series

- The JLIP Video Capture Software can be used with the GV-CB1U and GV-DS1U.

## WINDOWS® 95

Refer to the Windows® 95 manual or your computer's manual for details on basic Windows® 95 operating procedures.

### Installation Procedure

This software offers you the choice of viewing on-screen messages in English or French. Select the desired language during installation by performing the following steps.

\* To start the setup program . . .

- 1** Launch Windows® 95
  - Close any other applications that are running.

---

- 2** Insert the "JLIP VIDEO CAPTURE" CD-ROM into the CD-ROM drive.

---

- 3** Choose "Run" from "Start" on the taskbar.

---

- 4** ***If you want English on-screen messages . . .***

If the "JLIP VIDEO CAPTURE" CD-ROM is in Drive D, type "D:\JCPT\SETUP" in the box to the right of "Name". If the disk is in Drive E, type "E:\JCPT\SETUP".

***If you want French on-screen messages . . .***

If the "JLIP VIDEO CAPTURE" CD-ROM is in Drive D, type "D:\JCPTF\SETUP" in the box to the right of "Name". If the disk is in Drive E, type "E:\JCPTF\SETUP".

  - Click "OK".
  - Once the setup program is running, simply follow the instructions displayed on-screen.
  - When setup is complete, the "JLIP VIDEO CAPTURE" icon appears on the screen.
  - "JLIP VIDEO CAPTURE Setup was completed successfully." appears.

---

- 5** Click "OK" to complete installation.

## WINDOWS® 3.1

Refer to the Windows® 3.1 manual or your computer manual for details on basic Windows® 3.1 operating procedures.

### Installation Procedure

This software offers you the choice of viewing on-screen messages in English or French. Select the desired language during installation by performing the following steps.

\* To start the setup program . . .

- 1** Launch Windows® 3.1
  - Close any other applications that are running.

---

- 2** Insert the "JLIP VIDEO CAPTURE" CD-ROM into the CD-ROM drive.

---

- 3** Choose "Run" from "File" in the "Program Manager".

---

- 4** ***If you want English on-screen messages . . .***

If the "JLIP VIDEO CAPTURE" CD-ROM is in Drive D, type "D:\JCPT\SETUP" in the box to the right of "Name". If the disk is in Drive E, type "E:\JCPT\SETUP".

***If you want French on-screen messages . . .***

If the "JLIP VIDEO CAPTURE" CD-ROM is in Drive D, type "D:\JCPTF\SETUP" in the box to the right of "Name". If the disk is in Drive E, type "E:\JCPTF\SETUP".

  - Click "OK".
  - Once the setup program is running, simply follow the instructions displayed on-screen.
  - When setup is complete, the "JLIP VIDEO CAPTURE" icon appears on the screen.
  - "JLIP VIDEO CAPTURE Setup was completed successfully." appears.

---

- 5** Click "OK" to complete installation.

**NOTE :** This instruction manual uses English on-screen messages in its explanation.

The Video Capture software can be started up in the same way as any other program running under Windows. The procedure differs slightly depending on whether you're using Windows® 3.1 or Windows® 95.

## Preparation

- Turn on your computer.
- Turn on the video source units (such as camcorders and VCRs).
- If you want to capture a still picture from a recorded tape, load the tape into the video unit.
- If you want to capture an image from the data stored in the JLIP Video Producer Software, be sure to load the disk on which the image is stored.

Close any programs that are running. You cannot run other programs simultaneously with the Video Capture software.

With Windows® 3.1, open the group of application icons in the Program Manager and double-click the application icon you want to launch.

With Windows® 95, click the [START] button on the taskbar, and the Program menu appears on the screen. Move the mouse pointer over the program entry you want to run and click to start the program.

Now let's start the program.

If you're using Windows® 3.1, open the JLIP Video Capture group in the "Program Manager" and double-click the JLIP Video Capture icon.

If you're using Windows® 95, select JLIP Video Capture from the "Start menu" and click to start.



---

**INITIALIZING JLIP** **page 22**

---



---

**SELECT UNITS** **page 23**

---



---

**MAIN DESKTOP WINDOW** **page 24**

---

## HOW TO CLOSE THE PROGRAM

---

Double-click the control menu button in Windows® 3.1 or click “**Exit**” in the “**File (F)**” menu.

In Windows® 95, simply click the Close button.

If you try to close the program with no image data saved, the message “**The album has not been saved. Save?**” appears. Please note that if you close without saving, all unsaved captured data will be deleted.

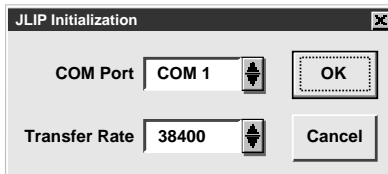
1. Click “**Exit**” from “**File**” in the menu bar.
  - The program closes.

File	
New Album	Ctrl+N
Open Album	Ctrl+O
Save Album	Ctrl+S
Open JLIP (jlp) File	
Save As JLIP (jlp) File	
Save Image <u>A</u> s...	Ctrl+A
Exit	

## INITIALIZING JLIP

The first time you start the Video Capture software, JLIP initialization is required. This sets which of the computer's COM ports (connector into which the RS-232C cable is plugged) is connected to the JLIP Video Capture Docking Station. The initialization window automatically appears the first time you start the software after installation. Do not forget to carry out this JLIP initialization procedure. The JLIP must be initialized again whenever you connect a new image source or other unit to the JLIP Video Capture Docking Station.

1. Start the JLIP Video Capture software.
2. The "**JLIP Initialization**" screen automatically appears.
3. Select "**COM Port**".
  - COM1 through COM4 ports are available. Check to see which COM port is connected to the JLIP Video Capture Docking Station and select it.
4. Select "**Transfer Rate**".
  - Normally select 38400.
  - 38400 may not be available on some computers. When transmission errors take place during use, switch to 19200 or 9600. Image data transmission will be slower at these speeds.
5. Click "**OK**". Call up the "**JLIP Initialization**" window and check the connected units.



**NOTE :** If you want to change a unit or COM port or Transfer Rate, select "**Initialize**" from "**Set-up**" in the menu bar to call up the "**JLIP Initialization**" window. Repeat this setting procedure.

If a connection is incorrect, a connected unit is not turned on, or the connection ID numbers overlap, the message "Connection error" appears. Click "**OK**" to return to the Main desktop.

### NOTE:

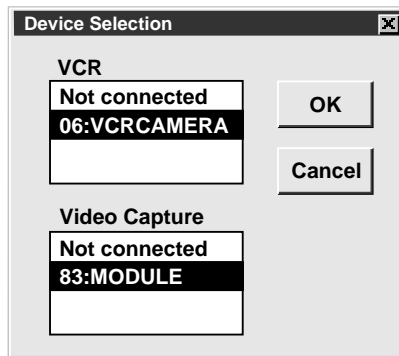
If a connection is incorrect, an error message may be displayed and the connected device name will not appear on-screen.

- The COM port used for the JLIP connector is not selected, or the COM port is selected but the connection is wrong. Check the connected COM port and select it on the "JLIP Initialization" screen.
- The BIOS settings on your PC are not correct. Change the BIOS settings.

Refer to the PC's instruction manual or consult the computer manufacturer for details.

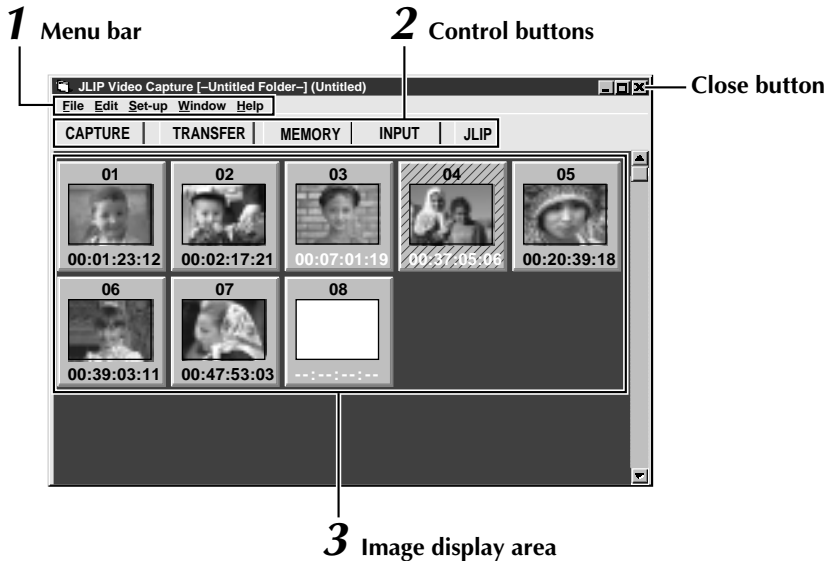
## SELECT UNITS

6. Call up the “**Device Selection**” window.
7. Click the name of the unit required.
  - The word “**VCR**” appears in the VCR box to indicate the Video source unit is now in use.
  - The word “**MODULE**” appears in the **Video Capture** box to indicate the Video Capture Docking Station is now in use.
  - Only one VCR and one Video Capture device can be selected.
8. Click “**OK**”.
  - The main desktop window returns (setting complete).



**NOTE :** The “**Device Selection**” window automatically appears when JLIP initialization is complete. However, if you want to select equipment whose JLIP initialization has already been carried out, select “**Device Change**” from “**Set-up**” in the menu bar to call up the “**Device Selection**” window.

## MAIN DESKTOP WINDOW



### 1 Menu bar

Displays function menus. See the next page for detailed information.

### 2 Control buttons

- **CAPTURE button** (☞ pg. 29)  
Press to **CAPTURE** a desired image from an image source. When pressed, an index image appears under this button.
- **TRANSFER button** (☞ pg. 31 – 32)  
The **TRANSFER** button is used to start Automatic Transfer. Automatic Transfer is divided into Program Capture and Interval Capture.
- **MEMORY/INPUT buttons**  
These buttons do not function.
- **JLIP button** (☞ pg. 45 – 71)  
The JLIP Video Capture software and JLIP Video Producer software cannot run simultaneously. When you want to run the JLIP Video Producer software, press this button to call up a cross bar and run the software. To resume using the JLIP Video Capture software, first select “Close Serial” from “Set-up” on the JLIP Video Producer Software’s menu bar, then press the **JLIP** button.



### 3 Image display area

Each time you press the Capture button an index image is captured into the image area. Up to 99 images can be captured, with up to five images in one horizontal frame. Index images are provided to allow you to confirm that you have captured the images you want.

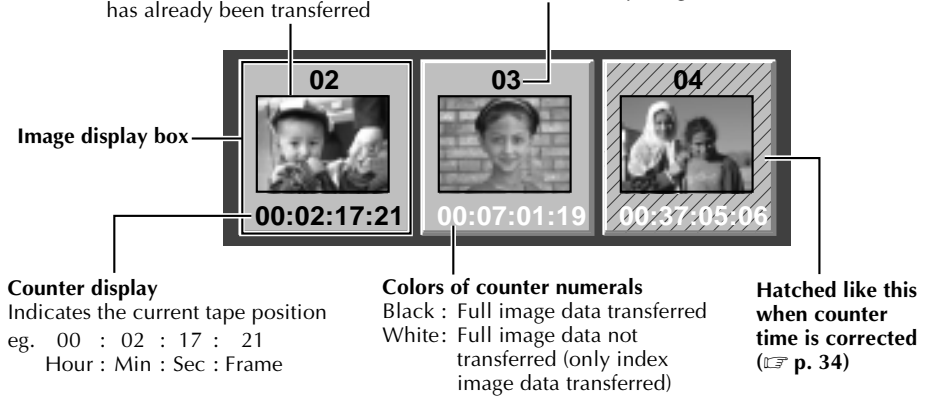
- Index image data: 80 x 60 pixels
- Full image data: 640 x 480 pixels

#### Index image

Click to select an index image, and

- the border of the Image display box turns green
- Double-click an index image, and Full image data will appear if it has already been transferred

#### Index numbers are automatically assigned



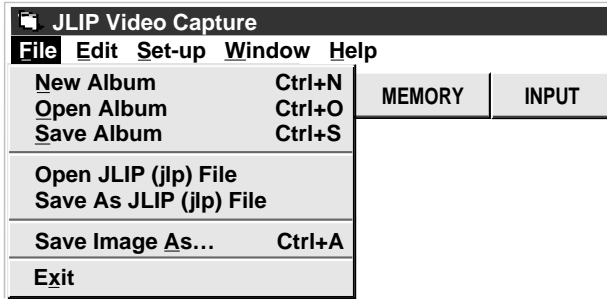
### When an index image is double-clicked

Full image data will appear if it has already been transferred.

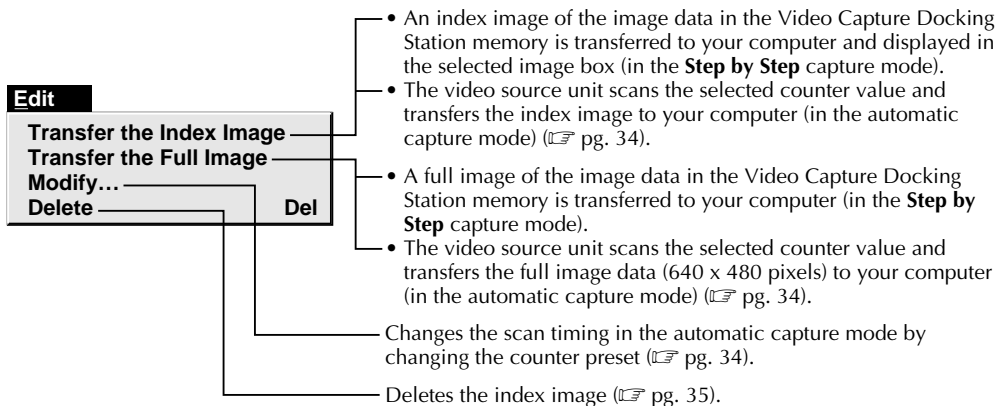
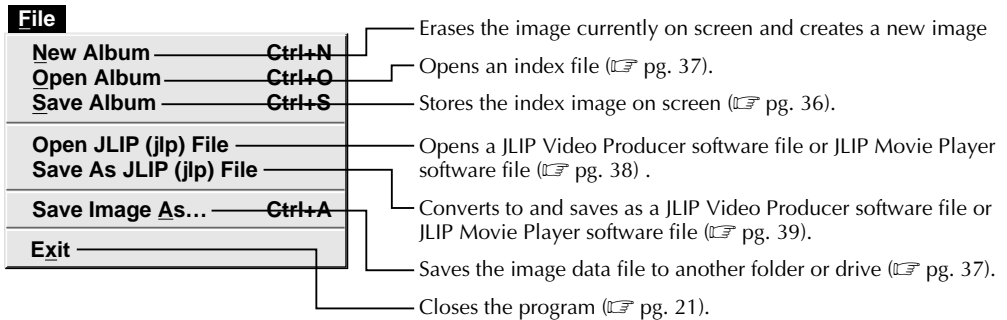


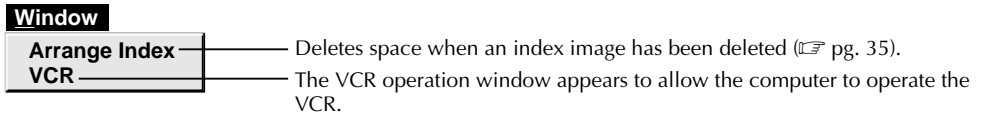
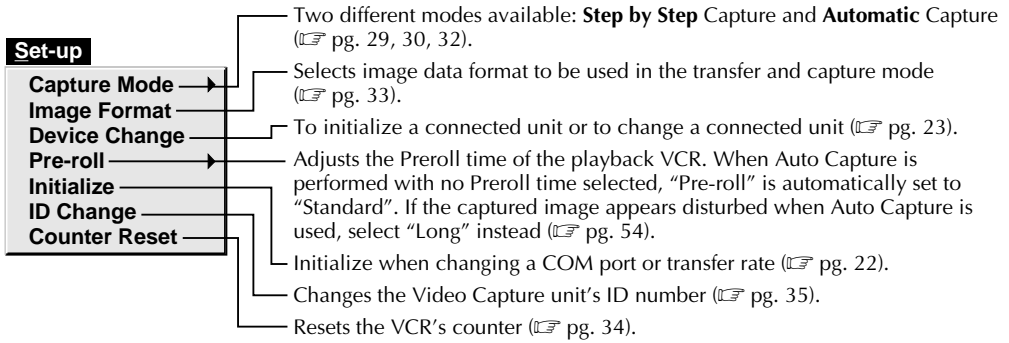
## MENU BAR

All program functions can be selected from the menus in the menu bar. Click any item in the menu bar to open the corresponding pulldown menu. Then click the desired command in the pulldown menu. Some menu entries are invalid depending on the program status. Invalid commands appear lighter than valid commands.

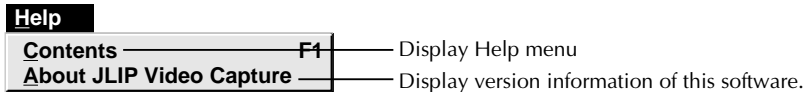
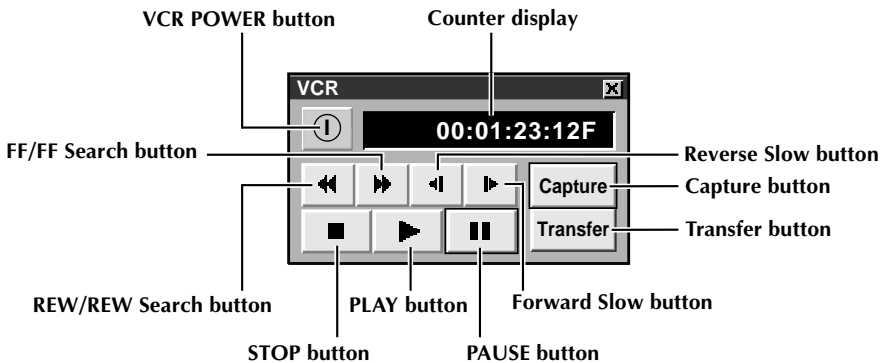


## Each pulldown menu is configured as follows





## [VCR] operation window



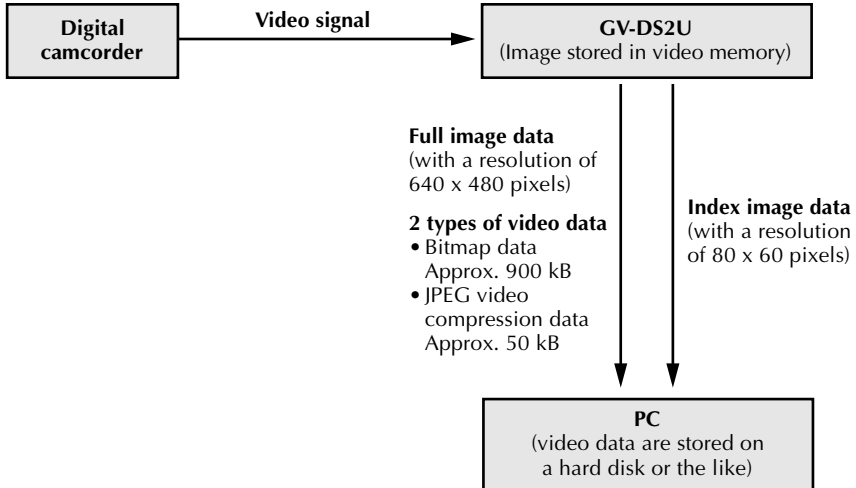
### NOTE : Counter reset

If you use a DV-format digital camcorder, counter information is represented by the time code written on the tape. Counter reset is not possible.

## CAPTURING VIDEO IMAGES

There are three capture modes available: **Step by Step**, Program and Interval.

### Image data flow



When storing full image data on a 2HD disk,

- An image saved in the bitmap data format can be stored on one disk.
- About 28 images saved in the JPEG video compression format can be stored on one disk.

This is the case when using floppy disks formatted for 1.44 MB.

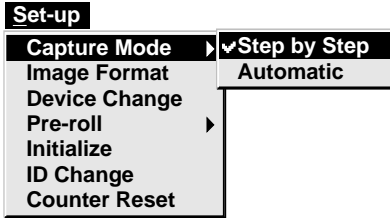
#### NOTE:

- The index image is displayed in the image display box.
- Each time the image display box is double-clicked, the full image data (640 x 480 pixels) is displayed only after full image data transfer is finished.

## STEP BY STEP CAPTURE

Use the Step by Step Capture mode when you want to:

- Capture a smaller number of images.
- Confirm the images being captured.



### NOTES:

- Index image/Full image data are transferred to the image display boxes bordered in green. Click and select the desired box(es).
- When transferring full image data using the Bitmap image format (\*.bmp), the transfer takes a very long time, causing the video source unit to stop playback automatically.

## Preparation

- Make sure all units are properly connected (☞ pg. 14).
- Click "Image Format" in "Set-up" and select the desired format (☞ pg. 33).

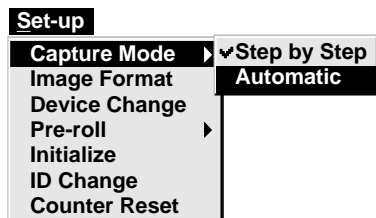
- 1 Open the menu bar and click "Set-up" — "Capture Mode" — "Step by Step".
  - The Step by Step Mode is entered.
- 2 Click "CAPTURE" on the image you want to capture.
  - Click "Window" — "VCR" to have the VCR scan the picture in the VCR Operate window (☞ pg. 27).
  - When you press the **CAPTURE** button, full image data (640 x 480 pixels) is captured into the Video Capture Docking Station memory. Index image data (80 x 60 pixels) is simultaneously transferred to the computer.
- 3 Index image data is transferred to the computer.
  - The message "No.1 index image being transferred" appears during data transfer.
- 4 The message "Transfer the full image ? Yes/No" appears. Click "Yes". Full image data (640 x 480 pixels) is transferred to the computer.
  - You cannot use the **TRANSFER** button in Step by Step Transfer mode.
- 5 The full image data is transferred to the computer.
  - The message "No.1 image being transferred" appears during data transfer.
- 6 Repeat steps 2 through 5 as required.

## AUTOMATIC CAPTURE

There are two types of automatic capture: Program mode and Interval mode. You can save time in either mode because, once the initial settings have been stored or you have decided what pictures to capture, the subsequent capture process is carried out automatically.

## PROGRAM CAPTURE

In the Program Capture mode, select the images you want to capture, and the JLIIP Video Capture Docking Station will automatically capture and transfer the images to your computer.



### Preparation

- Make sure all units are properly connected (☞ pg. 14).
- Insert a tape into the video source unit. Click "**Image Format**" in "**Set-up**" and select "**Field Picture**" in the Capture Mode (☞ pg. 33).

- 1 Open the menu bar and click "**Set-up**" — "**Capture Mode**" — "**Automatic**".
  - The "Automatic Transfer" window appears.
- 2 Select data to be transferred.
  - When you select "**Index Image**", index image data (80 x 60 pixels) is transferred to your computer.
  - When you select "**Index & Full Image**", both the index image data (80 x 60 pixels) and full image data (640 x 480 pixels) are transferred to the computer.
- 3 Select "**Program Capture**" and click "**OK**".

#### NOTE:

- Before transferring your images, make sure that enough space is available on your hard disk. For full image data space requirements, ☞ pg. 28.
- When transferring full image data using the Bitmap image format (\*.bmp), the transfer takes a very long time, causing the video source unit to stop playback automatically.

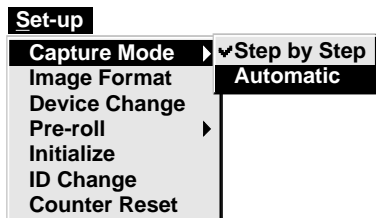


- 4 Click "**Window**" — "**VCR**" to call up the **VCR Operation window**.
- 5 Operate the video source unit via the **VCR Operation window**.
- 6 Click the "**Capture**" button on the desired video image, and index image data (80 x 60 pixels) is transferred to the computer.
  - The message "**No.1 index image being transferred**" appears during data transmission.
- 7 Repeat steps 4 through 6 as necessary.
- 8 Click "**Transfer**" button.
  - If you want to capture full image data (640 x 480 pixels) after capturing the "**Index Image**" in step 2, click "**Index & Full Image**" and then click the "**Transfer**" button.

1. The message "**Index No.1 being scanned**" appears while the video source unit is scanning the picture to be captured.
2. The message "**No.1 index image being transferred**" appears. When you select "**Index & Full Image**" in step 2, the message "**No.1 image being transferred**" appears while the full image data is being transferred to the computer.
3. The images captured in step 7 are scanned by the video source unit and automatically transferred to the computer.

## INTERVAL CAPTURE

The Interval Capture mode is best suited for capturing images at set intervals from a camcorder.



### NOTE:

- Make sure that enough hard disk space is available on your computer before executing video transfer. For full image data space requirements, see pg. 28.
- Transfer of index image data/full image data starts at the image box bordered in green. Click and select the desired image box.
- When transferring full image data using the Bitmap image format (\*.bmp), the transfer takes a very long time, causing the video source unit to stop playback automatically.

## Preparation

- Make sure all units are properly connected (see pg. 14).
- Insert a tape into the video source unit. Click "Image Format" in "Set-up" and select "Field Picture" in the Capture Mode (see pg. 33).

- 1 Open the menu bar and click "Set-up" — "Capture Mode" — "Automatic".
  - The "Automatic Transfer" window appears.
- 2 Select the data to be transferred.
  - When you select "Index Image", index image data (80 x 60 pixels) is transferred to your computer.
  - When you select "Index & Full Image", both index image data (80 x 60 pixels) and full image data (640 x 480 pixels) are transferred to the computer.
- 3 Select "Interval Capture".
- 4 Set the interval.
  - Select the time interval at which pictures are captured.
- 5 Set the number of pictures to be captured and click "OK".
  - From 1 up to 99
- 6 Click "Window" — "VCR" to call up the VCR Operation Window. Start video playback a few seconds prior to the point where you want image capturing to start.
- 7 Operate the video source unit via the VCR Operation window and click the "Transfer" button at the desired picture.

1. The message "No. 1 index image being transferred" appears while the index image data is being transferred to the computer.
2. When you select "Index & Full Image" in step 2, the message "No. 1 image being transferred" appears while the full image data is being transferred to the computer.
3. The message "Index No. 2 being scanned" appears while the video data are fast-forwarded and played at the time intervals set in step 4 to scan the video data on the VCR.
  - The image selected when "Transfer" is clicked is captured and subsequent images are captured at the time interval specified by the counter value selected in step 4.
  - The video source unit enters the Pause mode when capture is complete.

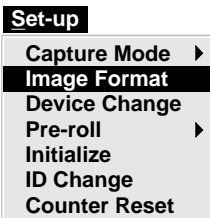


## SELECTING A PICTURE FORMAT

Under “Image Format”, you can specify the full image data format and the capture mode.

**1** Open the menu bar and click “Set-up” — “Image Format”.

- The “Image Format” window appears.



**2** Select format.

- There are two different settings available: “JPEG (\*.jpg)” and “Bitmap (\*.bmp)”. Refer to “Picture Data Format” below for details.

**3** Select capture mode.

- There are two different settings available: “Frame Picture” and “Field Picture”. Refer to “Capture Mode” below for details.

**4** Click “OK”.

- This completes picture format setting.
- This setting takes effect the next time you use the capture function.

## TRANSFER DATA

Full image data can be captured and transferred in two different formats.

### Picture Data Format

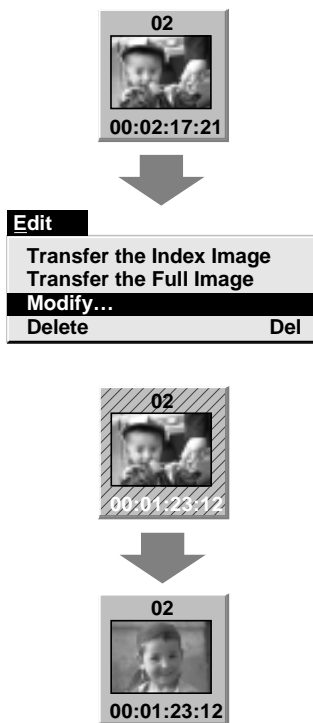
- **JPEG (\*.jpg)**
  - This is the default setting. If you do not set Picture Format, image data is captured in this format.
  - JPEG (Joint Photographic Expert Group) is a leading standard defining the compression and decompression of still color pictures.
  - The quantity of transferred data appears smaller because the images are compressed. This results in a shorter transfer time.
- **Bitmap (\*.bmp)**
  - Transfer time is longer when you use this format because there is no data compression. The benefit is that picture quality is maintained with no deterioration.
  - Bitmap is a data format representing characters and graphics with combinations of pixels. Full image data resolution is 640 x 480 pixels with 16.77 million colors (24-bit color). Index image data resolution is 80 x 60 pixels with 16.77 million colors (24-bit color).

### Capture Mode

- **Frame Picture**
  - This is the default setting. If you do not set Picture Format, images are captured in this mode.
  - Since a frame consists of two overlapping 1/60 sec. images (one 1/30 sec. image forms a field), it is unstable when capturing fast-moving motion pictures.
- **Field Picture**
  - While a field contains only half the data of a frame — meaning that vertical resolution is half that of a frame — images captured from a fast-moving motion picture are more stable than when captured with “Frame Picture”.

## COUNTER VALUE CHANGE

If you want to replace a captured image with a different one, you can capture the new one by changing the counter value.

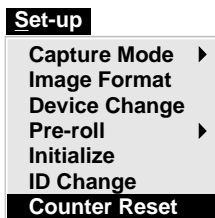


**NOTE :** Note that if the index image data is saved in step 4, the hatching pattern indicating the change will no longer appear the next time it is called up.

- 1 Click the image display box of the index number you want to change.
  - The box is bordered in green.
- 2 Open the menu bar and click "Edit" — "Modify...".
  - The "Modify Capture Point" window appears.
- 3 Enter a new counter value.
- 4 Click "OK".
  - The index image is surrounded by a hatching pattern indicating that a change is being made.
  - The counter value is changed to the value you just entered.
- 5 Open the menu bar and click "Set-up" — "Capture Mode" — "Automatic", then select "Program Capture" in the "Automatic Transfer" window and click "OK".
- 6 Play the tape on the video source unit and click "Edit" — "Transfer the Index Image".
  - Index image data at the counter setting is captured.
  - Be sure to complete steps 1 through 7. If they are not all followed, the index image and the full image will be different as the full image data will not have been changed in step 6.
- 7 Click "Edit" — "Transfer the Full Image".
  - Full image data at the counter setting is transferred.

## COUNTER RESET

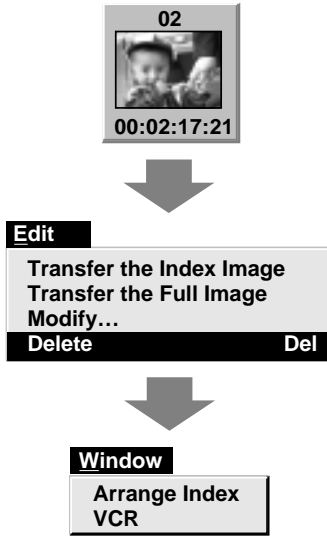
You can change the counter setting on connected video source units (VHS, VHS-C). Since digital camcorders record the counter as a time code, the counter on a digital camcorder cannot be reset.



- 1 Open the menu bar and click "Set-up" — "Counter Reset".
  - The VCR's counter is reset.

## DELETE INDEX IMAGE AND FULL IMAGE

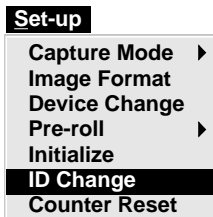
You can delete any captured picture. Both index image (80 x 60 pixels) and full image (640 x 480 pixels) are deleted.



- 1 Click the image display box you want to delete.
  - The box is bordered in green.
- 2 Open the menu bar and click “Edit” — “Delete”.
  - This deletes the selected image data.
- 3 Then click “Window” — “Arrange Index”.
  - This removes the deleted index image’s space and renumbers the remaining index display box. You can still run the program without re-arranging the index.

## CHANGE ID

You can change the Video Capture Unit’s ID number.



- 1 Open the menu bar and click “Set-up” — “ID Change”.
  - ID Change window appears.
- 2 Enter a new ID number.
- 3 Click “OK”.
  - This completes the ID number change.
- 4 Open the menu bar and click “Set-up” — “Initialize”.
  - The “JLIP Initialization” window appears.
  - Start JLIP initialization (☞ pg. 22, 23).

## CREATE NEW FOLDER

Creating a new folder (directory) is a good idea when capturing an image from another video tape.

File	
New Album	Ctrl+N
Open Album	Ctrl+O
Save Album	Ctrl+S
Open JLIP (jlp) File	
Save As JLIP (jlp) File	
Save Image As...	Ctrl+A
Exit	

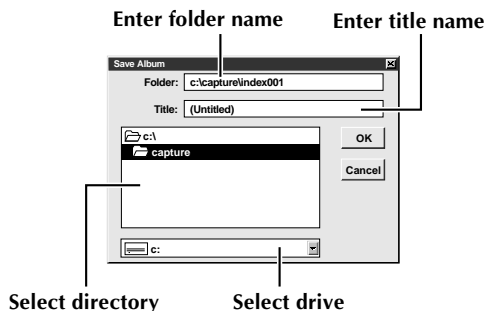
- 1 Open the menu bar and click “File” — “New Album”.
  - The image display area is refreshed.
  - If the index image data on screen is not saved, you will be asked whether to save or not.

## SAVING

Select when storing the contents displayed in the image display area (☞ pg. 25).

File	
New Album	Ctrl+N
Open Album	Ctrl+O
Save Album	Ctrl+S
Open JLIP (jlp) File	
Save As JLIP (jlp) File	
Save Image As...	Ctrl+A
Exit	

- 1 Open the menu bar and click “File” — “Save Album”.
  - The “Save Album” window appears.
- 2 Type the folder name and title.
  - You can save without entering any title.
- 3 Click “OK”.
  - The file is saved.



## OPEN INDEX

File	
New Album	Ctrl+N
<b>Open Album</b>	<b>Ctrl+O</b>
Save Album	Ctrl+S
Open JLIIP (jlp) File	
Save As JLIIP (jlp) File	
Save Image As...	Ctrl+A
Exit	

- 1 Open the menu bar and click "**File**" — "**Open Album**".
  - The "**Open Album**" window appears.
- 2 Select the name of the folder (directory).
- 3 Click "**OK**".

## SAVE THE FULL IMAGE DATA

You can save a file under another name or in another folder so that you can edit it without losing the original.

By processing the captured images with commercially available image editing software, you can create your own unique and highly personal illustrations and graphics for incorporation into everything from postcards to newsletters and Internet homepages.

File	
New Album	Ctrl+N
Open Album	Ctrl+O
Save Album	Ctrl+S
Open JLIIP (jlp) File	
Save As JLIIP (jlp) File	
Save Image As...	Ctrl+A
Exit	

- 1 Click the image display box of the Index No. to be saved.
  - The image display box is framed in green.
- 2 Click "**File**" — "**Save Image As...**" on the menu bar.
  - The "**Save Image As... (Index No. □)**" window appears.
- 3 Click the name of the desired folder (directory) in the Select Directory box and enter the file name.
  - When saving the data to floppy disk, enter the drive name as well.
- 4 Click "**OK**".

### NOTE:

- It is not possible to change the image format when saving the full image data (☞ pg. 33).
- If the full image data has not been transferred to the computer, it is not possible to save it. First transfer the full image data, then save it.

**USING JLIP VIDEO PRODUCER SOFTWARE DATA**

The Video Capture Docking Station can capture JLIP Video Producer software data at an edit-in point corresponding to a preset counter number.

File	
New Album	Ctrl+N
Open Album	Ctrl+O
Save Album	Ctrl+S
Open JLIP (jlp) File	
Save As JLIP (jlp) File	
Save Image As...	Ctrl+A
Exit	

**Preparation**

- Make sure all units are properly connected (☞ pg. 14).
- Insert the tape program edited with the Video Producer Software into the video source unit.
- If the data is stored on a floppy disk, load disk into the floppy disk drive.

- 1 Open the menu bar and click "**File**" — "**Open JLIP (jlp) File**".
  - The "**Open JLIP (jlp) File**" window is displayed.
- 2 Double-click the name of the desired folder (directory) in the Select Directory box.
  - If the data is stored on a floppy disk, enter the drive name.
- 3 Click on the file name to select it.
- 4 Click "**OK**".
  - The computer monitor displays Scene No., counter number at Edit-in Point, and a blank image box.
- 5 Open the menu bar and click "**Set-up**" — "**Capture Mode**" — "**Automatic**".
- 6 Select the data you want to transfer and "**Program Capture**" and click "**OK**".
- 7 Click the "**TRANSFER**" button.
  - The image data scanned by the video source unit is automatically transferred to your computer.

## HOW TO STORE JLIP VIDEO PRODUCER SOFTWARE DATA

Data from this unit can be converted to JLIP Video Producer software files.

If index image data is saved as a JLIP Video Producer software file, the file can be printed with the optional GV-PT1U/GV-PT2U Video Printer.

Refer to the instruction manual for details.

File	
New Album	Ctrl+N
Open Album	Ctrl+O
Save Album	Ctrl+S
Open JLIP (jlp) File	
Save As JLIP (jlp) File	
Save Image As...	Ctrl+A
Exit	

### Preparation

- Make sure all units are properly connected (☞ pg. 14).
- Insert a video tape into the video source unit.
- If you want to store the data on a floppy disk, load a data disk into the floppy disk drive, create a directory and sub-directory on the data disk (☞ pg. 56).

- 1 Open the menu bar and click "File" — "Save As JLIP (jlp) File".
  - The "Save As JLIP (jlp) File" window is displayed.
- 2 Enter the folder name (directory) and file name.
  - If you want to store the data on a floppy disk, enter the drive name.
- 3 Click "OK".
  - The data converted to a JLIP Video Producer software file is stored on the floppy disk in the selected drive.
  - JLIP Video Producer software files can be used for video program editing or printed with the video printer (☞ pg. 62, 64).

#### NOTE:

When stored data is opened with the JLIP Video Producer software, the edit-in and edit-out points have the same counter value. When you want to perform program editing, change the counter number at the edit-out point in the JLIP Video Producer software's "Modify Edit Points".

**NOTE :** External noise or disturbance may interfere with the microprocessors built into the JLIP Video Capture Docking Station. If this happens, turn the power off and then turn it on again.

<b>Problem</b>	<b>Cause</b>	<b>Page</b>
<b>JLIP Video Capture Software does not work.</b>	<ul style="list-style-type: none"> <li>● Does the JLIP Video Producer Software or the JLIP Movie Player Software run ? The JLIP Video Capture Software cannot run together with it.</li> </ul>	—
<b>Operating the camcorder (capturing video images through the computer etc.) is not possible.</b>	<ul style="list-style-type: none"> <li>● If the camcorder is attached to the JLIP Video Capture Docking Station with the battery pack installed or with the AC Power Adapter/Charger attached, it is impossible to operate the camcorder using the computer.</li> </ul>	—
<b>No effect when clicking the Input Select/Memory buttons.</b>	<ul style="list-style-type: none"> <li>● These buttons do not function.</li> </ul>	—
<b>The video unit does not operate when “Window” — “VCR” in the menu bar and “VCR” in the “VCR” operation window are clicked.</b>	<ul style="list-style-type: none"> <li>● The counter display in the “VCR” operation window turns blue.</li> <li>● Is your video unit compatible with JLIP ? Only JLIP-compatible units can be operated. If you are using a JLIP-compatible unit and it still won't work, check to make sure that it is correctly connected.</li> <li>● Is the video unit selected in “Select Unit” ? Select correctly.</li> <li>● Initialize JLIP.</li> <li>● Make sure the video unit is turned on.</li> </ul>	27  14 – 16  23 22
<b>The “VCR” operation window display shows a different operation from what the video unit is actually doing.</b>	<ul style="list-style-type: none"> <li>● Slow Play in the VCR operation window automatically switches to Play after approximately 10 to 20 seconds.</li> <li>● In some cases, the video unit may continue slow-motion playback even when the “VCR” operation window changes from Slow Play to Play. Check your video unit's instruction manual for details.</li> </ul>	27
<b>On-screen display of video unit is not stored in memory.</b>	<ul style="list-style-type: none"> <li>● It is not possible to capture the on-screen display (date, time cord etc.) into the computer.</li> </ul>	—
<b>Counter display appears in the image display box even when there is no tape in the video unit.</b>	<ul style="list-style-type: none"> <li>● When capture video data from a powered-on camcorder with no tape loaded, a counter display may appear in the image display box. Images corresponding to the displayed counter number can no longer be captured.</li> </ul>	—



<b>Problem</b>	<b>Cause</b>	<b>Page</b>
<b>Cannot capture video data with the desired counter number.</b>	<ul style="list-style-type: none"> <li>● There may be a slight difference between the counter of the video image that you want to capture and the Index image data/ Full image data captured in the computer. This is not a malfunction.</li> </ul>	29 – 32
<b>Counter cannot be reset.</b>	<ul style="list-style-type: none"> <li>● Counter reset is not available with digital camcorders.</li> </ul>	34
<b>Program capture suddenly stops.</b>	<ul style="list-style-type: none"> <li>● When you start program capture at the beginning of the tape, the video unit stops playback, ending program capture. Start video capture about 20 seconds after the point where the recording begins.</li> </ul>	30
<b>After finishing video capture, the video file remains in the JCPT folder (where the program run file is contained).</b>	<ul style="list-style-type: none"> <li>● If you want to erase the file because of limited hard disk space, start the program once then close it. The video remaining in the JCPT folder will be cleared.</li> </ul>	—
<b>JLIP initialization not possible.</b>	<ul style="list-style-type: none"> <li>● Make sure that the IRQ (Interrupt ReQuest) is not being used by another device.</li> <li>● COM port selection is wrong. Confirm the COM port number and execute JLIP initialization again.</li> </ul>	22
<b>With Video capture/ Transfer done in Automatic Transfer mode, the captured image looks like two pictures laid one upon another.</b>	<ul style="list-style-type: none"> <li>● In this case, video capture is not possible using the “Frame Picture” setting. Change the setting to “Field Picture” and try video capture again.</li> </ul>	33
<b>The index image is not size of its image display box.</b>	<ul style="list-style-type: none"> <li>● Change the system font size of the computer.</li> </ul>	—

The monitor displays of the application software illustrated in this manual may differ from those you are actually viewing depending on the operating environment of your computer.

Operation will be significantly slower when used in an environment other than that recommended (☞ pg. 18).

While basic VCR operations such as playback and fast-forward are available, a “transmission error” may occur in some models during video transfer. In this case, first unplug the AC Power Adapter/Charger’s power cord from the AC outlet, then plug it back into the AC outlet, and run the software again.

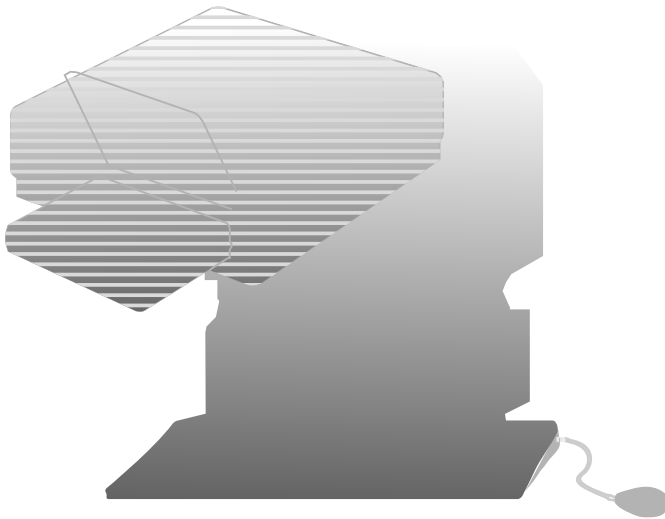
Message	<ul style="list-style-type: none"> <li>● <b>Appears when:</b></li> <li>■ <b>Action:</b></li> </ul>	Page
COM port is not available.	<ul style="list-style-type: none"> <li>● Not connected to COM port set by JLIP Initialize.</li> <li>■ Check the COM port number and connector and retry JLIP initialization.</li> </ul>	22
Connected device not found.	<ul style="list-style-type: none"> <li>● Connected devices are not turned on.</li> <li>● Selected COM port is not connected properly.</li> <li>■ Make sure connection is proper and carry out JLIP initialization. Then turn on this unit and the connected devices.</li> </ul>	22, 23
Error — Transfer halted.	<ul style="list-style-type: none"> <li>● Video unit is brought to STOP or ends playback during automatic capture.</li> <li>■ Check the auto capture setting.</li> <li>● Full image data (640 x 480 pixels) cannot be captured if you start auto capture at the beginning of the tape. Video capture stops if video playback is stopped.</li> <li>■ Start video capture 20 seconds after the start of the recording.</li> <li>● Tape is too short to match the preset number of images or there is a section of non-recorded tape.</li> <li>■ Click "OK", check the tape length and re-enter the number of images to be captured. Use a fully recorded tape.</li> </ul>	—     32

Message	<ul style="list-style-type: none"> <li>● <b>Appears when:</b></li> <li>■ <b>Action:</b></li> </ul>	Page
Execute after playing back the VCR.	<ul style="list-style-type: none"> <li>● Video unit is not in Play mode during Interval Capture.</li> <li>■ Click "OK", set the video unit to Play and click "Transfer" again.</li> </ul>	32
Not enough disk space is available.	<ul style="list-style-type: none"> <li>● Remaining disk space is under 1 MB.</li> <li>■ Click "OK", check disk space and select a drive with space available with "Save Image As...".</li> </ul>	—
Communication error.	<ul style="list-style-type: none"> <li>● If operation stops after this message appears, turn the Capture Docking Station off and then on again. Images stored in memory will be lost.</li> <li>■ Do not use any other application while JLIP Video Capture and JLIP Video Producer are running as it may interfere with communication. Do not click and move the mouse during data transfer.</li> <li>● If your computer's energy saver, battery voltage indication or screen saver is engaged, the image data transmission may be interrupted.</li> <li>■ Disengage these functions. Refer to your computer's instructions manual on details.</li> </ul>	—
Check the capture device.	<ul style="list-style-type: none"> <li>● If operation stops after this message appears, turn the Capture Docking Station off and then on again. Images stored in memory will be lost.</li> </ul>	—



# JLIP VIDEO PRODUCER SOFTWARE SECTION

- The Readme.TXT file provides additional information for setup and information that is not included in the instruction manual. Please read the file before installing the provided software program.
- You can find the latest information (in English) on the provided software program at our www server.  
<www><http://www.jvc-victor.co.jp/index-e.html>



## What is JLIP ?

JLIP\* stands for Joint Level Interface Protocol, a new communication protocol which allows AV units equipped with a JLIP terminal to be controlled by a personal computer.

\* **JLIP** is a registered trademark of JVC.

## Operating Environment

- Personal computer with Microsoft® Windows® 3.1 or Windows® 95
- CPU Intel DX4® or faster processor
- Minimum RAM requirement: 8 MB
- Available Hard Disk space of at least 4 MB (When JLIP Video Capture Software is also installed, the minimum Hard Disk space required is 8 MB in total.)
- Color display capable of at least 640 x 480 pixels, 256 colors  
Recommended 1024 x 768, 16.77 Mil colors
- 1 free serial transmission port, compatible with 9600 bps transmission rate, connectable to RS-232C with 9 pin serial connector.  
Recommended compatible with UART 16550A
- Mouse (Windows® compatible)
- CD-ROM drive

**Note :** An optional 9 pin serial conversion adapter is required for computers using serial communication port other than standard 9 pin.

\* Microsoft® and Windows® are either registered trademarks or trademarks of Microsoft Corporation in the United States and/or other countries.

\* Other product and company names included in this instruction manual are trademarks and/or registered trademarks of their respective holders.

## Devices to connect to the VIDEO CAPTURE DOCKING STATION

### ● Player

Digital camcorder: GR-DVXU, GR-DV1U\* and GR-DVM1U\*

\* Attach a Docking Station equipped with a JLIP connector to the GR-DV1U or GR-DVM1U.

### ● Recorder

Recording deck equipped with a JLIP connector

Recording deck equipped with a remote pause jack

Recording deck equipped with neither a JLIP connector nor a remote pause jack

### ● Video printer

Video printer equipped with a JLIP connector: GV-PT1U and GV-PT2U

The JLIP Video Producer Software can be used with the GV-CB1U or GV-DS1U.

(As of September, 1997)

## WINDOWS® 95

Refer to the Windows® 95 manual or your computer's manual for details on basic Windows® 95 operating procedures.

### Installation Procedure

This software offers you the choice of viewing on-screen messages in English or French. Select the desired language during installation by performing the following steps.

\*To start the setup program . . .

- 1** Launch Windows® 95
  - Close any other applications that are running.

---

- 2** Insert the "JLIP VIDEO PRODUCER" CD-ROM into the CD-ROM drive.

---

- 3** Choose "Run" from the "Start" on the taskbar.

---

- 4** ***If you want English on-screen messages . . .***

If the "JLIP VIDEO PRODUCER" CD-ROM is in Drive D, type "D:\VDPROE\SETUP" in the box to the right of "Name". If the disk is in Drive E, type "E:\VDPROE\SETUP".

***If you want French on-screen messages . . .***

If the "JLIP VIDEO PRODUCER" CD-ROM is in Drive D, type "D:\VDPROF\SETUP" in the box to the right of "Name". If the disk is in Drive E, type "E:\VDPROF\SETUP".

  - Click "OK".
  - Once the setup program is running, simply follow the instructions displayed on-screen.
  - When setup is complete, the "JLIP VIDEO PRODUCER" icon appears on the screen.
  - "JLIP VIDEO PRODUCER Setup was completed successfully." appears.

---

- 5** Click "OK" to complete installation.

## WINDOWS® 3.1

Refer to the Windows® 3.1 manual or your computer manual for details on basic Windows® 3.1 operating procedures.

### Installation Procedure

This software offers you the choice of viewing on-screen messages in English or French. Select the desired language during installation by performing the following steps.

\*To start the setup program . . .

- 1** Launch Windows® 3.1
  - Close any other applications that are running.

---

- 2** Insert the "JLIP VIDEO PRODUCER" CD-ROM into the CD-ROM drive.

---

- 3** Choose "Run" from "File" in the "Program Manager".

---

- 4** ***If you want English on-screen messages . . .***

If the "JLIP VIDEO PRODUCER" CD-ROM is in Drive D, type "D:\VDPROE\SETUP" in the box to the right of "Name". If the disk is in Drive E, type "E:\VDPROE\SETUP".

***If you want French on-screen messages . . .***

If the "JLIP VIDEO PRODUCER" CD-ROM is in Drive D, type "D:\VDPROF\SETUP" in the box to the right of "Name". If the disk is in Drive E, type "E:\VDPROF\SETUP".

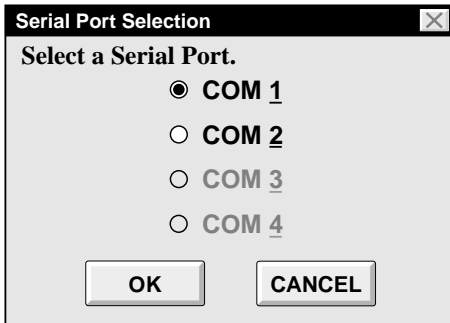
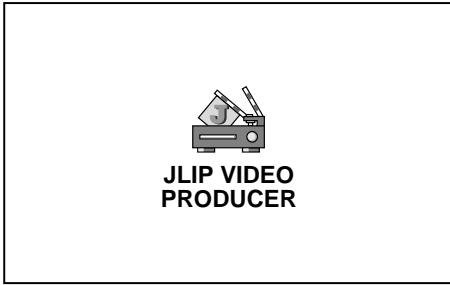
  - Click "OK".
  - Once the setup program is running, simply follow the instructions displayed on-screen.
  - When setup is complete, the "JLIP VIDEO PRODUCER" icon appears on the screen.
  - "JLIP VIDEO PRODUCER Setup was completed successfully." appears.

---

- 5** Click "OK" to complete installation.

#### NOTE:

This instruction manual uses English on-screen messages in its explanation.

**NOTE:**

If a connection is incorrect, an error message may be displayed and the connected device name will not appear on-screen.

- The COM port used for the JLIP connector is not selected, or the COM port is selected but the connection is wrong. Check the connected COM port and select it on the "Serial Port Selection" screen.
- The BIOS settings on your PC are not correct. Change the BIOS settings.

Refer to the PC's instruction manual or consult the computer manufacturer for details.

**Starting JLIP Video Producer Software****1 PREPARE DEVICE(S)**

Turn the device(s) on and set the camcorder's Power Dial to "PLAY".

**2 ACCESS VIDEO PRODUCER**

Double-click the JLIP VIDEO PRODUCER icon and the Serial Port Selection dialog box appears.

**3 SELECT SERIAL PORT**

Select the port number of the connector you are using to connect the computer to the Video Capture Docking Station.

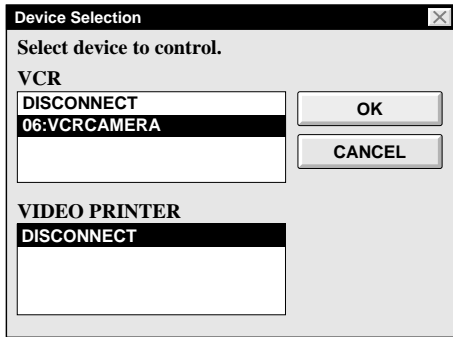
- If the connector number is A, B... A corresponds to 1.
- Click "OK".
- If the connection is correct, the Device Selection dialog box appears.
- An error message "**No devices detected to connect. Power ON all devices in system.**" appears . . .
  - ... when a wrong port number is selected.
  - ... when the connection is wrong.
  - ... when the device's ID number is already in use.
  - ... when the device's power is not turned on.

Check the Serial Port selection, too.

To return to step 1, check the connection and the device's power and try again.

- When all serial COM ports are occupied by other applications the error message "Error — This application will close. Check devices — Confirm that power is ON." appears. Free a serial COM port to start up JLIP Video Producer Software.





## 4 SELECT DEVICE(S)

Click on the name of the device you wish to control. Clicking “OK” brings up the JLIP VIDEO PRODUCER window.

- It is possible to select a second device of a different type simultaneously, but it is impossible to select two same type devices simultaneously.

## 5 SELECT RECORDER

Click “Set-up” — “Recorder Select” and the “Recorder Selection” dialog box appears.

Click on the name of the recorder you want to use and click “OK”.

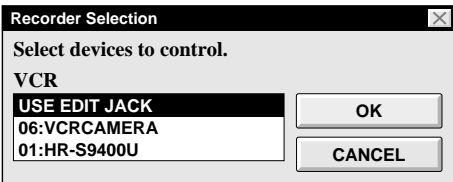
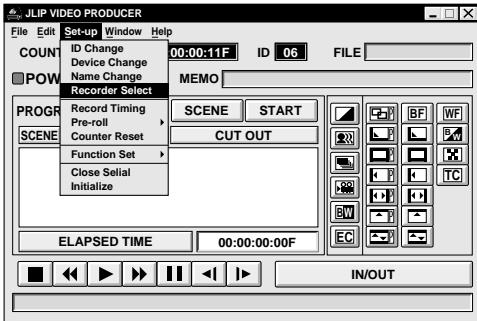
***When using a recording deck equipped with a JLIP connector . . .***

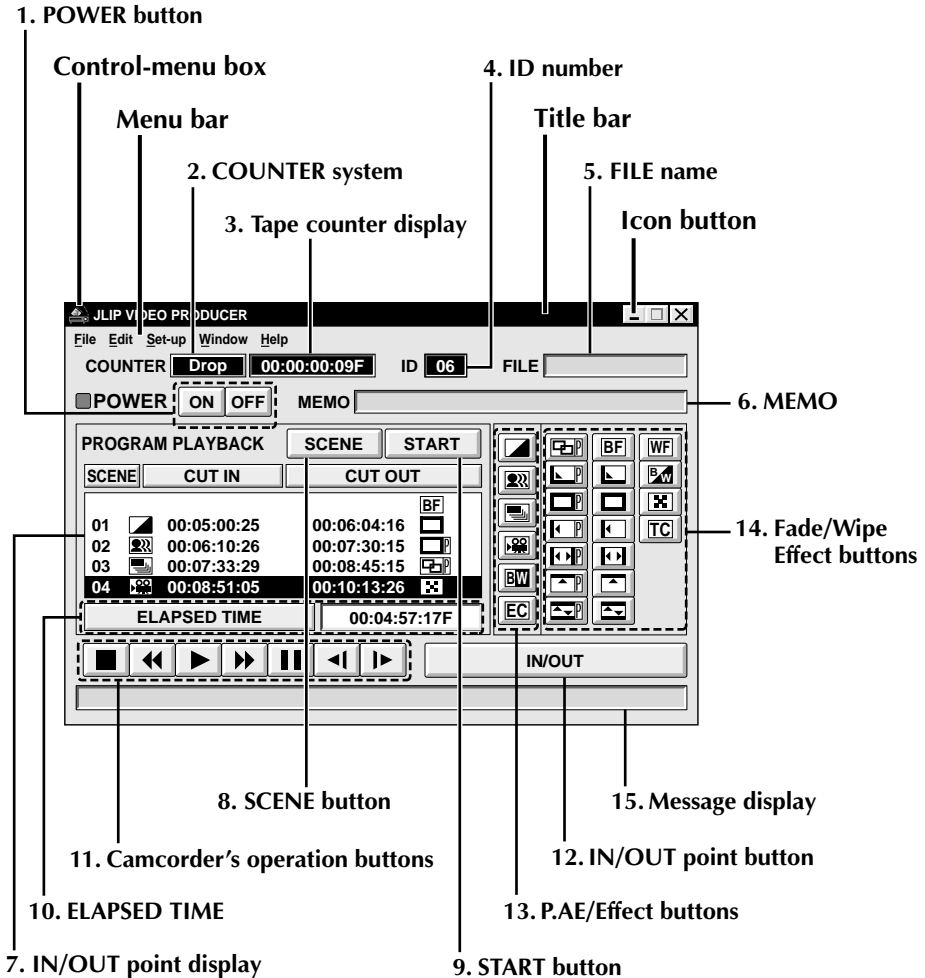
select the name and ID number of your recording deck.

***When using a recording deck not equipped with a JLIP connector but a remote pause jack, or when using a non-JVC recording deck . . .***

select “USE EDIT JACK” in the “Recorder Selection” dialog box.

- It is impossible to select a recording deck already designated as a player to be recorder.





## Drop Frame System\*\*

This system automatically adjusts the gap between the time code\* (1 second = 30 frames) and NTSC signal whose frame period is 29.97 seconds. When minutes increase, frames 00 and 01 frames are dropped and time count starts with frame 02. If minutes are multiples of 10 (0, 10, 20 and 30, etc.), time count starts with frame 00.

\* Time data for hours, minutes, seconds and frames (1 second = approx. 30 frames) are recorded on the tape the moment that shooting starts.

**1. POWER button**

- Turns the device on and off.
- If power is not supplied to the camcorder beforehand, you can not turn the camcorder on and off by clicking this button.
- Some camcorders cannot be turned on and off by clicking this button.

**2. COUNTER system**

- GR-DVXU series uses the Drop Frame system\*\*.

**3. Tape counter display**

- Displays actual tape position.

ex.

00 : 01 : 45 : 10F  
(Hours : Minutes : Seconds : Frames)

**4. ID number**

- Displays the selected device's ID number.

**5. FILE name**

- Displays file name after saving the program under a new name.

ex. travel

**6. MEMO**

- If you wish to add some comment to the file, you can input it.

ex. Europe Tour

**7. IN/OUT point display**

- You can set up to 99 in/out points per file.

**8. SCENE button**

- Plays back only one programmed scene so that you can preview it.
- Operates only the camcorder.

**9. START button**

- Starts editing. Scenes are recorded in scene's numerical order. After starting editing, this button changes to STOP button.

**10. ELAPSED TIME**

- Displays the total elapsed time of all the programmed scenes.

**11. Camcorder's operation buttons**

- Operate the camcorder.



**Stop button**



**REW/REW Search button**



**Play button**



**FF/FF Search button**



**Pause button**



**Reverse Slow button**



**Forward Slow button**

- To start Reverse/Forward Slow-motion Search, first click the Pause button and then the Reverse/Forward Slow button.
- Functions your camcorder does not have cannot be performed by the above buttons.
- Click "Window" — "VCR Control" on menubar to call up the "VCR Control" window. You can control the video source unit from this window.

**12. IN/OUT point button**

- Registers the cut-in and -out points of the scene you want to dub.

**13. P.AE/Effect buttons**

- Set one of the 5 P.AE/Effects per programmed scene.
- To cancel the selected effect, press the EC (Effect Clear) button.

**14. Fade/Wipe Effect buttons**

- Set one of the 7 Picture Wipes and 10 Fades/Wipes per scene transition.
- To cancel the selected effect, press the TC (Transition Clear) button.

**15. Message display**

- Displays the connected device mode, etc.

**To exit from the VIDEO PRODUCER window, choose "Exit" from "File".**

**NOTE:**

*If you need the "JLIP VIDEO PRODUCER HELP" window, choose "Contents" from "Help".*

## Operating camcorder

### 1 PREPARE CAMCORDER

Set the camcorder's Power Dial to "PLAY" and insert a recorded tape into the camcorder.

### 2 PLAYBACK ON TV MONITOR

Click ►.

- Playback picture appears on the TV monitor.
- To confirm other operations, click other buttons.

## Setting in/out points

### 1 PLAYBACK ON TV MONITOR

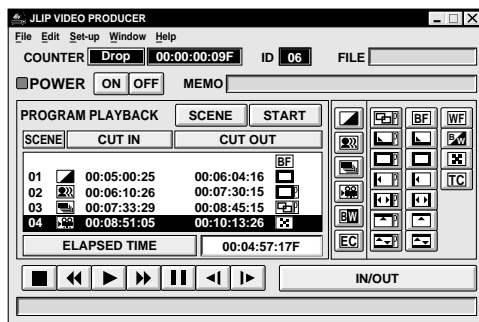
Click ►. Playback picture appears on the TV monitor.

### 2 SET CUT IN/OUT POINTS

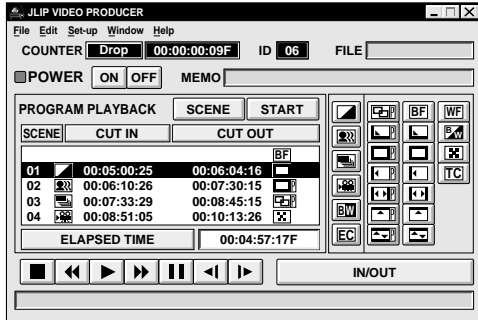
Select "Function Set" from "Set-up" in the JLIIP VIDEO PRODUCER window and select "Edit Tape".

To set CUT IN/OUT points, click IN/OUT button at the beginning and end of the scene you want to dub.

- Set CUT IN/OUT points so that the CUT OUT point's value is larger than the CUT IN point's.
- A scene with no CUT OUT point will disable program playback and dubbing.
- If you set CUT IN point at the beginning of the tape or if you set CUT OUT point at the end of the tape, editing may not function properly. Change previously registered CUT IN/OUT points slightly and try setting them again.
- When connecting to a VHS-C camcorder, rewind the tape to its beginning and press COUNTER RESET on the camcorder (ⓘ pg. 69).
- The counters of DV-format digital camcorders cannot be reset.



## Playing back one programmed scene



### 1 SELECT SCENE

Click on the line where the CUT IN/OUT points you want to preview are displayed and that line will be highlighted.

### 2 START PLAYBACK

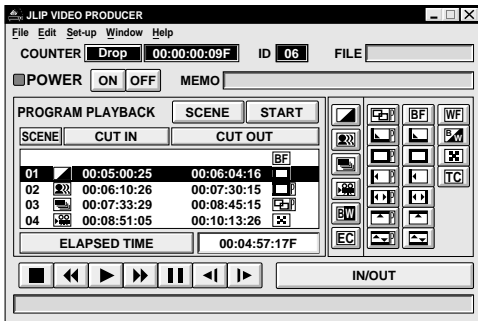
Click "SCENE".

- The camcorder searches the scene by going to a point prior to the CUT IN point and starts playback at the CUT IN point. Playback stops after the CUT OUT point is passed.

### NOTE:

*When one programmed scene with a Fade/Wipe Effect is played back, the scene is played back but its Fade/Wipe Effect is not executed.*

## Playing back all programmed scenes



### 1 START PLAYBACK

Click "START".

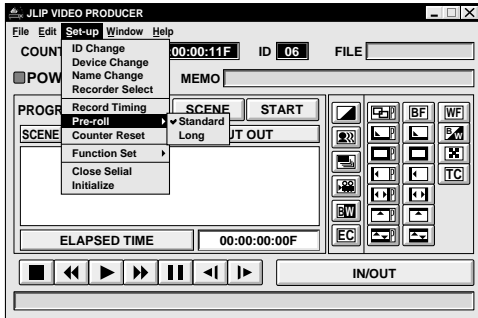
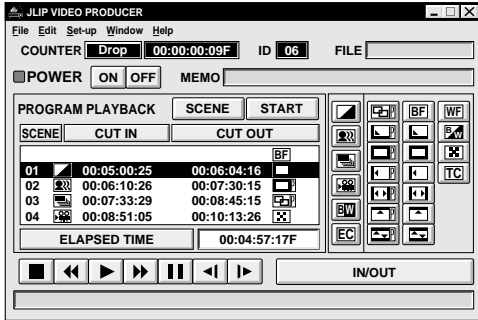
- The camcorder plays back scenes in numerical order and stops immediately after the last scene's CUT OUT point.
- Only the camcorder moves.

### NOTES:

- During playback of programmed scenes, do no operation other than pressing "STOP". If other operations are done, a malfunction may occur.*
- If "SCENE" or "START" is clicked at the end of tape, the camcorder will not function properly.*
- If the source tape has a blank portion, scenes will not be edited properly.*
- If connected to a recording deck equipped with a J-LIP connector, make sure a tape is not loaded in the recording deck when you click "START".*

## Dubbing

You can record all programmed scenes onto the tape in the recording deck.



### 1 PREPARE NEW TAPE

Make sure the erase protection tab on the tape is present. Then insert it into the recording deck and set the recording deck to the Record-Pause mode.

### 2 START EDITING

Click "START" on the JLIP VIDEO PRODUCER window.

When editing stops, the camcorder enters the Stop mode and the recording deck enters the Record-Pause mode.

- During dubbing, do no operation other than pressing "STOP". If other operations are done, a malfunction may occur.

### 3 STOP EDITING

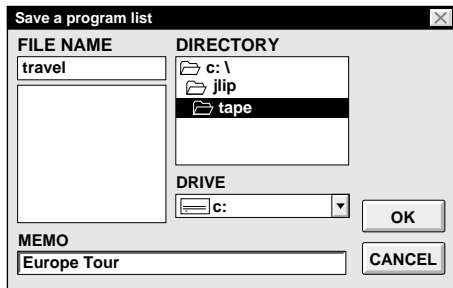
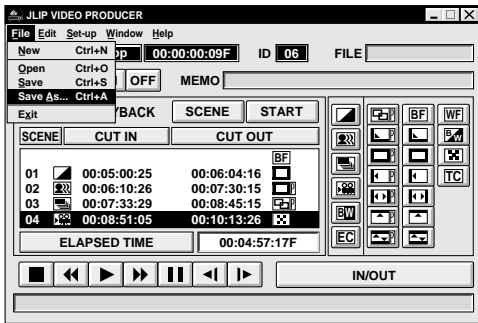
Stop the recording deck.

## NOTES:

- Also refer to the camcorder's instruction manual on dubbing.
- There may be small margin between the CUT IN/OUT points you input and the dubbed scenes' ones.
- Dubbing is impossible using a camcorder whose JLIP connector serves as an Edit jack.
- If the images appear disturbed at the CUT IN/OUT points, change the Pre-roll time setting from "Standard" to "Long".

## Saving the program list on hard disk

It is possible to save all programmed scene information as a file in the computer.



### 1 START SAVING

Select "Save As" from "File" on the JLIP VIDEO PRODUCER window.

- The "Save a program list" dialog box appears.

### 2 ENTER FILE NAME

Input a file name (up to 8 characters) in the "FILE NAME" field.

- The extension is jlp. ex.: travel.jlp
- You can also input a comment (up to 30 characters) in the "MEMO" field.

### 3 SAVE FILE

Click "OK" and the file will be saved on the hard disk which is in use.

## NOTE:

The programmed scene information that is saved includes only the counter reading at the IN/OUT point, the Fade/Wipe Effect and the P.AE/Effect. The image is not be saved.

## Saving the program list on a floppy disk

Prepare floppy disk by creating a directory named "JLIP" and subdirectory named "tape" beforehand.

### 1 SELECT FLOPPY DISK DRIVE

Click ▼ in "DRIVE".

### 2 OPEN SUBDIRECTORY

Click "tape" in the "DIRECTORY".

### 3 SAVE FILE

Click "OK".

## NOTE:

If the JLIP VIDEO PRODUCER window is closed before saving the file, the file will not be saved. So, save the file before closing the JLIP VIDEO PRODUCER window if you wish to keep it.

## Opening a saved file

### 1 LOOK FOR FILE NAMES

Click "Open" from "File" on the JLIP VIDEO PRODUCER window.

- The "Open a program list" dialog box appears.

### 2 SELECT FILE NAME

Saved file names appear in the "FILE NAME" field. Click on the file name you want and it appears in the field above.

### 3 DETERMINE FILE NAME

Click "OK" and the file will be read.

- The JLIP VIDEO PRODUCER window returns.

## Opening a file saved on floppy disk

### 1 INSERT FLOPPY DISK INTO DRIVE

### 2 SELECT DRIVE NUMBER

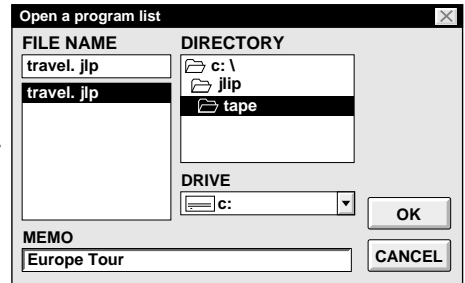
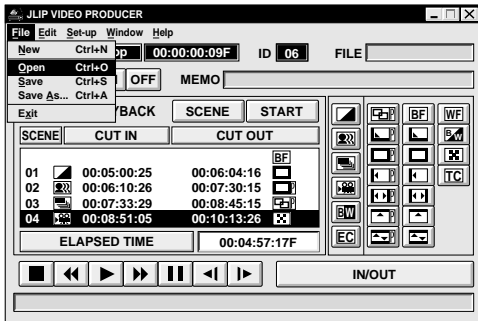
Click ▼ in "DRIVE".

### 3 LOOK FOR FILE NAMES

Open "tape" in the directory.

### 4 SELECT FILE NAME

Follow steps 2 and 3 in "Opening a saved file" on the left.



## Correcting and cutting the programmed counter data

### Correcting the program counter data

### 1 DESIGNATE SCENE

Double-click on the scene you want to modify.

OR . . .

Click on the scene you want to modify and choose "Modify" from "Edit".

- The "Modify Edit Points" dialog box appears (pg. 57).

### 2 ENTER NEW DATA

Click on the part to be corrected and input a new value there. To correct the data, click on "OK".

### Cutting the counter data being set up

### 1 DESIGNATE SCENE

Click on the scene you want to cut.

### 2 CUT SCENE

Choose "Cut" from "Edit".

- The message "Scene No.  will be deleted." appears.
- To cut the scene, click on "OK".

### Cutting all programmed scenes

### 1 CUT SCENE

Choose "All Clear" from "Edit". The message "OK to delete all programmed scenes?" appears. To cut, click on "OK".



## Copying a programmed scene and transferring it to an other position

### 1 DESIGNATE SCENE TO BE COPIED

Click on the scene you want to copy.

### 2 STORE DESIGNATED SCENE IN MEMORY

Choose "Copy" from "Edit".

### 3 DESIGNATE POSITION

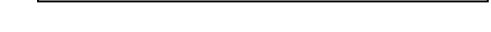
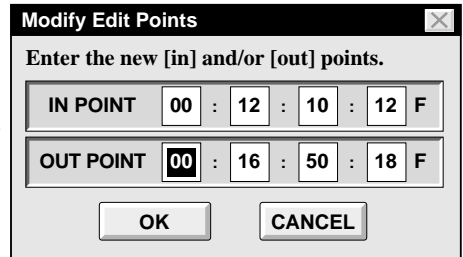
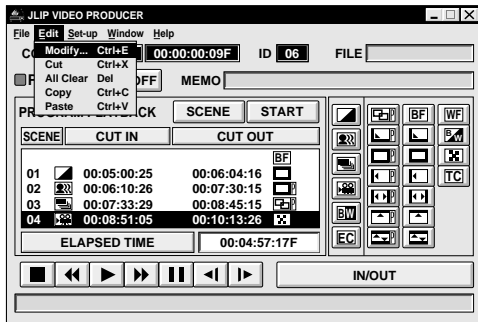
Click on the scene number which is above the position to which the copied scene is to be transferred.

### 4 TRANSFER COPIED SCENE

Choose "Paste" from "Edit".

## NOTE:

*It is not possible to paste a segment above scene "01".*



## Transferring the programmed scene to an other position

### 1 DESIGNATE SCENE TO BE TRANSFERRED

Click on the scene you want to transfer and choose "Cut" from "Edit".

- The message "Scene No.  will be deleted." appears. To cut, click on "OK".

### 2 DESIGNATE POSITION

Click on the scene number which is above the position to which the scene is to be transferred.

### 3 TRANSFER CUT SCENE

Choose "Paste" from "Edit".

## Overwriting the file

Saving any previously saved program using the same name. Overwrite erases the previously saved data for that file.

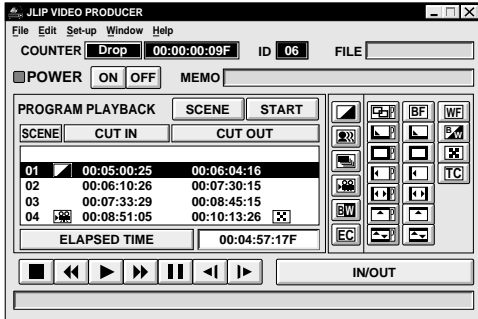
### 1 OVERWRITE FILE

After opening a file and modifying counter data (pg. 56), choose "Save" from "File" on the JLIP VIDEO PRODUCER window and click on "OK".

- The message "This file already exists. Do you want to overwrite it ?" appears. To overwrite the file, click on "OK".

## Selecting a P.AE/Effect

There are 5 P.AE/Effects available to spice up the programmed scene. You can select only one effect per programmed scene.



### 1 DESIGNATE SCENE

Click on the scene where you want to use a P.AE/Effect.

### 2 SELECT P.AE/EFFECT

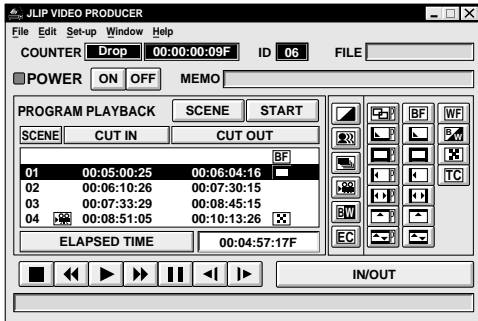
Click the P.AE/Effect button depending on your choice. The selected effect indication is displayed to the left of the CUT IN point.

**To cancel the selected P.AE/Effect . . .**

Click on the scene which has the effect you want to cancel, then click the EC (Effect Clear) button.

## Selecting a Fade/Wipe Effect

There are 17 Fades/Wipes available to be used for scene transitions.



### 1 DESIGNATE SCENE TRANSITION POINT

Click on the scene where you want to use a Fade/Wipe.

### 2 SELECT FADE/WIPE EFFECT

Click the Fade/Wipe Effect button depending on your choice.

The selected effect indication is displayed to the right of the CUT OUT point.

- The Fade/Wipe is executed between the selected scene (the one clicked) and the following one.

**To execute a Fade/Wipe Effect at the CUT IN point of scene "01" . . .**

Click on the blank line above scene "01" and select the effect you want.


**To cancel the selected Fade/Wipe Effect . . .**

Click on the scene which has the effect you want to cancel, then click the TC (Transition Clear) button.






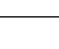

## NOTES:

- P.AE/Effects and Fades/Wipes are not available when any player except the GR-DVXU series is used.
- If you use Sepia or Monotone P.AE/Effects, you cannot use the Dissolve or Black & White Fader.




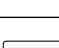



**P.AE/Effect buttons**

	<b>SEPIA</b> Recorded scenes have a brownish tint like old photos. Combine this with the Cinema mode for a classic look.
	<b>VIDEO ECHO</b> Adds a "ghost" to the subject, giving your recording a "fantasy" feeling.
	<b>STROBE</b> Your recording looks like a series of consecutive snapshots.
	<b>CLASSIC FILM</b> Gives recorded scenes a strobe effect.
	<b>MONOTONE</b> Like classic black and white films, your footage is shot in B/W. Used together with the Wide Cinema function, it enhances the "classic film" effect.
	<b>EFFECT CLEAR</b> Cancels the selected P.AE/Effect.





**Fade/Wipe Effect buttons**

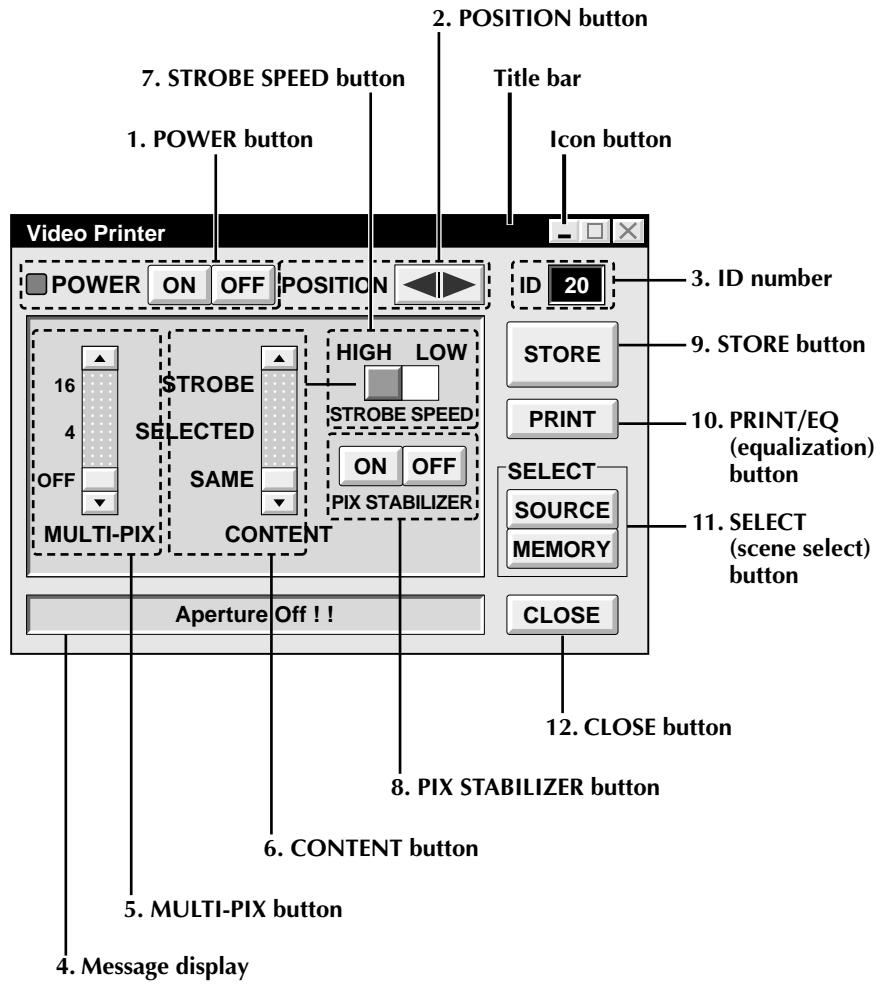
	<b>DISSOLVE</b> The new scene gradually appears as the old one gradually disappears.
	<b>CORNER WIPE</b> The new scene wipes in over the previous one from the upper right corner to the lower left corner.
	<b>WINDOW WIPE</b> The next scene gradually wipes in from the center of the screen toward the corners, covering the previous scene.
	<b>SLIDE WIPE</b> The next scene gradually wipes in over the previous one from right to left.
	<b>DOOR WIPE</b> The previous scene wipes out from the center to the right and left, like a door being pushed open to reveal the next scene.
	<b>SCROLL WIPE</b> The new scene wipes in over the last one from the bottom of the screen to the top.
	<b>SHUTTER WIPE</b> The new scene wipes in over the previous one from the center toward the top and bottom of the screen.

**Fade/Wipe Effect buttons**

	<b>BLACK FADER</b> Fade in or out with a black screen.
	<b>CORNER WIPE</b> Wipe in on a black screen from the upper right to the lower left corner, or wipe out from lower left to upper right, leaving a black screen.
	<b>WINDOW WIPE</b> The scene starts in the center of a black screen and wipes in toward the corners, or comes in from the corners, gradually wiping out to the center.
	<b>SLIDE WIPE</b> Wipe in from right to left, or wipe out from left to right.
	<b>DOOR WIPE</b> Wipe in as the two halves of a black screen open to the left and right, revealing the scene, or wipe out and the black screen reappears from left and right to cover the scene.
	<b>SCROLL WIPE</b> The scene wipes in from the bottom to the top of a black screen, or wipes out from top to bottom, leaving a black screen.
	<b>SHUTTER WIPE</b> Wipe in toward the center of a black screen from the top and bottom, or wipe out from the center toward the top and bottom, leaving a black screen.

**Fade/Wipe Effect buttons**

	<b>WHITE FADER</b> Fade in or out with a white screen.
	<b>BLACK &amp; WHITE FADER</b> Fade in to a color screen from a black and white screen, or fade out from color to black and white.
	<b>MOSAIC FADER</b> Fade in or out with a full-screen mosaic effect.
	<b>TRANSITION CLEAR</b> Cancels the selected fade/wipe effect.



**1. POWER button**

- Turns the device on and off.

**2. POSITION button**

- Selects the position to store a scene in memory for Multi-Print.

**3. ID number**

- Displays the selected device's ID number.

**4. Message display**

- Displays the operating mode of the selected device.

**5. MULTI-PIX button**

- Select by clicking (▲/▼) button.

**OFF** : Single print

**4** : 4 shots on one sheet

**16** : 16 shots on one sheet

**6. CONTENT button**

- Select by clicking (▲/▼) button.

**STROBE** : Stores the selected number of images at short intervals, and prints them all on one sheet.

**SELECTED** : Prints 4 or 16 selected scenes on one sheet.

**SAME** : Prints the same scene 4 or 16 times on one sheet.

**7. STROBE SPEED button**

- Effective when "STROBE" is selected from "CONTENT".

**HIGH** : When printing in the Strobe Print mode, the GV-PT1U stores scenes at intervals of approximately 1/4 second and the GV-PT2U at intervals of approximately 1/15 second.

**LOW** : When printing in the Strobe Print mode, scenes are stored at intervals of approximately 1/2 second.

**8. PIX STABILIZER button**

**ON** : If the scene you want to print is jittery, select "ON" to stabilize it.

**OFF** : Usually set to "OFF".

**9. STORE button**

- Stores scenes and titles you want to print in the video printer's memory.

**10. PRINT/EQ (equalization) button**

- Displays either "PRINT" or "EQ" on screen depending on the connected JVC Video Printer equipped with JLIP connector.

**PRINT:**

- Print command is available.

**EQ (equalization):**

- Adjusts picture equalization.
- Video printer does not have this function.

**11. SELECT (scene select) button**

- Switches between "SOURCE" (images from camcorder or VCR) and "MEMORY" (scenes stored in memory) for display on TV monitor.

**12. CLOSE button**

- Closes the "Video Printer" window.

## Printing

Before printing, perform the procedure listed below.

- Connect to image and sound source (☞ pg. 14, 15).
- Set VCR to external input.
- Set TV to VIDEO mode so that images from video printer appear.

### 1 BRING UP VIDEO PRINTER WINDOW

Select "Video Printer" from "Window" on the JLIP VIDEO PRODUCER window.

- The "Video Printer" window appears.
- To view the buttons on the JLIP VIDEO PRODUCER window, move the "Video Printer" window to the right and up keeping the title bar on the "Video Printer" window clicked.

### 2 PLAYBACK

Click ► on the JLIP VIDEO PRODUCER window.

- The "Video Printer" window appears behind the JLIP VIDEO PRODUCER window.
- To view the "Video Printer" window, click the title bar labelled "Video Printer".

### 3 STORE SCENE

Click "STORE" on the "Video Printer" window at the scene you want to print.

- The selected scene is stored in memory and appears on the TV monitor.

### 4 PRINT

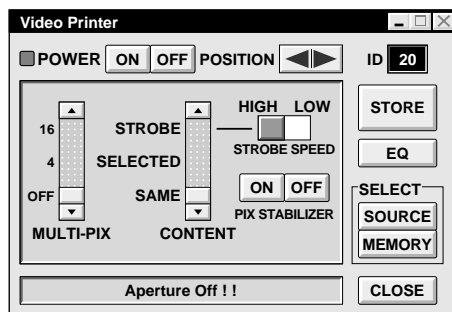
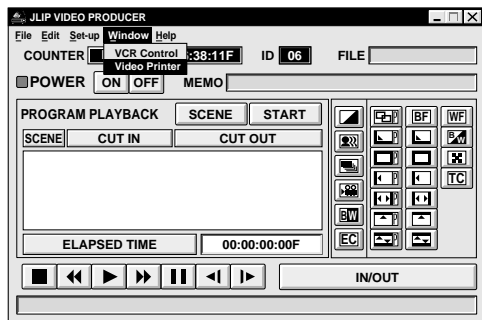
Insert print paper into the video printer and print.

- Also refer to the video printer's instruction manual.

### The following print styles are also available:

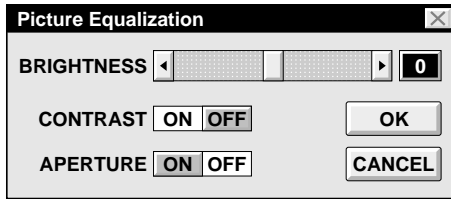
- Printing the same scene 4 or 16 times on one sheet. (Multi-Print)
- Printing various scenes on the same print sheet. (Multi-Print)
- Printing a scene within a scene. (Inset Print)
- Storing a selected number of images at short intervals and printing them on one sheet. (Strobe)

Also refer to the video printer's instruction manual.



## Adjusting picture equalization

You can adjust picture equalization; a feature not available on the video printer itself.



### 1 ACCESS PICTURE EQUALIZATION DIALOG BOX

Click "EQ" on the "Video Printer" window.

- The "Picture Equalization" dialog box appears.

### 2 DETERMINE ADJUSTMENT

After adjusting the items below, click "OK".

- The "Picture Equalization" dialog box closes.

<b>BRIGHTNESS</b> (factory preset: 0)	Move the indicator by clicking the (◀/▶) button. There are five settings from -2 to +2. - : Darken the image. + : Brighten the image.
<b>CONTRAST</b> (factory preset: ON):	<b>ON</b> : Automatically provides optimum light and shades when printing. <b>OFF</b> : Prints the stored scene with no adjustment.
<b>APERTURE</b> (factory preset: OFF):	<b>ON</b> : The image comes out sharp. <b>OFF</b> : The image comes out soft.

### NOTE:

Even if connection between computer and video printer is removed, this adjustment is stored in memory. BRIGHTNESS returns to 0 only when the video printer's power cord is removed from the AC outlet.

## Quitting the "Video Printer" window

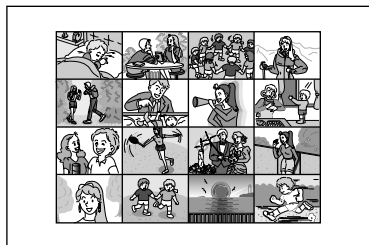
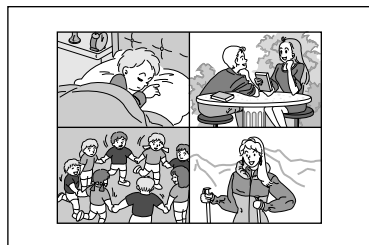
### 1 CLICK "CLOSE"

- The "Video Printer" window closes.

## Quitting the JLIP VIDEO PRODUCER window

### 1 CHOOSE "EXIT" FROM "FILE"

- The JLIP VIDEO PRODUCER window closes.



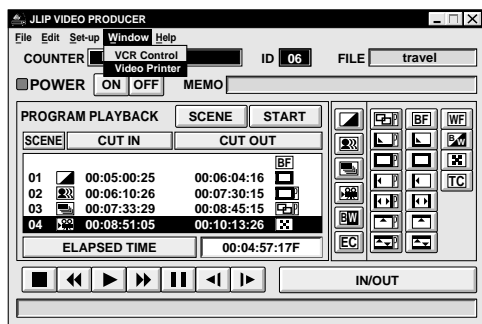
## Auto Capture

### Preparation

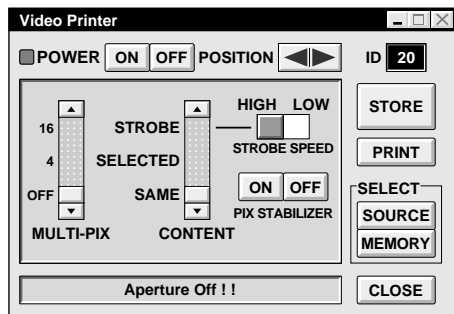
- Load the tape into VCR.
- Convert the captured data to JLIIP Video Producer software data and store it (pg. 39).
- Select file name (pg. 56).
- Prepare for printing (refer to the GV-PT2U instruction manual).
- Select desired layout using the remote control unit provided with the GV-PT2U.

### To Print Captured Video Data with Video Printer

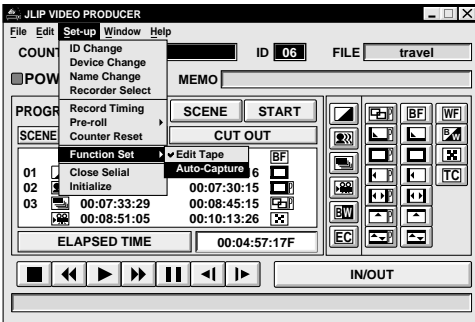
Captured video data can be automatically scanned and printed. You can print OFF, 4 or 16 images on one sheet.



- 1 Select **“Window”** — **“Video Printer”** in the JLIIP VIDEO PRODUCER window.
  - Video Printer window appears.
- 2 Select the number of scenes (OFF/4/16) and select **“SAME”** or **“SELECTED”** for the content.
  - Select this by clicking the buttons (▲/▼).







- 3 Click the Title bar in the JLIP VIDEO PRODUCER window and activate the window.
- 4 Select "Set-up" — "Function Set" — "Auto Capture".
- 5 Click "START".
  - The captured video data set first is searched and stored in the video printer.
  - When the data has been stored, the message "Image has been captured by printer." appears.
  - If the number of scenes was set to "OFF", or "4 or 16" in step 2 and then to "SAME", you can start printing simply by clicking "PRINT".
  - If the number of scenes was set to "4 or 16" in step 2 and then to "SELECTED", click "NEXT SCENE". The next scene is automatically searched and stored in the video printer.
- 6 Click "PRINT" to start printing.

## NOTES:

### *To print only the cut-in scene on the edited tape*

- ① Perform editing (refer to pages 52 through 54).
- ② Print (follow steps 1 through 5 above).
  - Select "Auto Capture" in step 4.
  - Click "START" in step 5. The cut-in point of Scene No. 1 is automatically searched and stored in the video printer.
  - You cannot start storing from Scene No. 2 or subsequent scenes.
  - Even if VCR is in Stop mode, clicking "START" automatically starts playback to search the cut-in point of Scene No. 1.
  - If you want to print a particular scene only, click "SCENE" in step 5.

## Changing ID number

The device's ID number is preset at factory as follows:

**ex. Camcorder: 06 or 07      Video printer: 20**

When connecting more than two same type devices, the same ID numbers will exist and a malfunction can occur. To avoid a malfunction, change the ID numbers.

It is recommended to change the ID number of an already connected device before connecting the same type device.

### 1 ACCESS "ID CHANGE" DIALOG BOX

Choose "ID Change" from "Set-up" on the JLIP VIDEO PRODUCER window.

- The "ID Change" dialog box appears.

### 2 SELECT DEVICE

Click on the name of the device and "CHANGE".

- The dialog box to enter new ID number appears.

### 3 ENTER NEW ID NUMBER

### 4 SET ID NUMBER

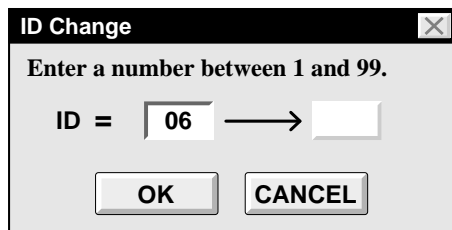
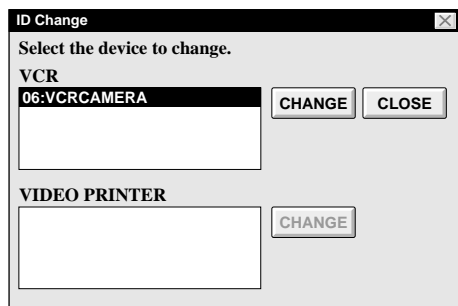
Click "OK".

- The message "The device ID will be changed." appears.

Clicking "OK" again sets that ID number and brings up the JLIP VIDEO PRODUCER window.

### NOTES:

- After step 4, perform the following "Connecting other device during operation".
- Do not enter ID number "0" because "JLIP Video Producer software" does not recognize "ID 0".



## Connecting other device during operation

When connecting an other device during operation or changing ID numbers, initializing is necessary to confirm the connected devices. (Not necessary to run "JLIP Video Producer software" from beginning again.)

### 1 INITIALIZE

Choose "Initialize" from "Set-up" on the JLIP VIDEO PRODUCER window.

## Changing the name of the device

### 1 ACCESS "NAME CHANGE" DIALOG BOX

Choose "Name Change" from "Set-up" on the JLIP VIDEO PRODUCER window.

- The "Name Change" dialog box appears.

### 2 SELECT DEVICE

Click on the name of the device and "CHANGE".

- The dialog box to enter new name of the device appears.

### 3 ENTER NEW NAME

### 4 SET NEW NAME

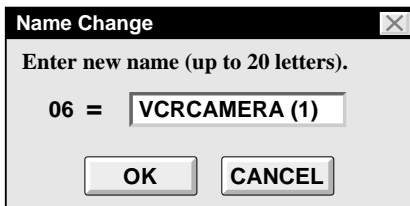
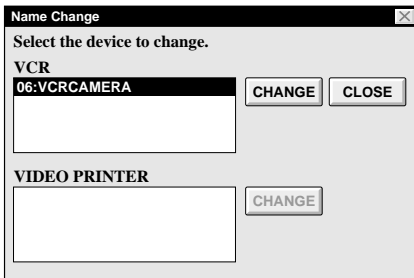
Click "OK".

- The message "Device name will be changed." appears.

Clicking "OK" again sets that device name and brings up the "Name Change" dialog box.

### 5 RETURN TO VIDEO PRODUCER WINDOW

Click "CLOSE".



## Changing the device to use while connecting over two same type devices

### 1 ACCESS "DEVICE SELECTION" DIALOG BOX

Choose "Device Change" from "Set-up" on the JLIP VIDEO PRODUCER window.

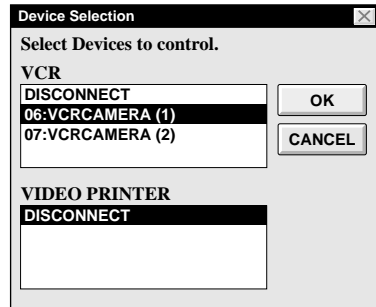
- The "Device Selection" dialog box appears.

### 2 SELECT DEVICE

Click on the name of the device and "OK".

### NOTE:

*It is impossible to use two same type devices simultaneously.*



## Adjusting the gap between the stored edit-start point in the computer and the dubbed one in the recording deck

During dubbing, the beginning of the scene stored in the computer can be missed or the scene prior to the transition you chose for the edit-start point can be dubbed into the recording deck. When these cases occur, adjust the gap for more accurate editing.

### 1 CHECK EDIT-START TIMING

After dubbing (☞ pg. 54), play back the dubbed scene.

### 2 ACCESS "RECORD TIME CORRECTION" DIALOG BOX

Choose "Record Timing" from "Set-up" on the JLIP VIDEO PRODUCER window.

- The "Record Time Correction" dialog box appears.

### 3 ENTER VALUE

To adjust the edit-start timing, enter a new value from 0.00 sec. to 2.60 sec.

**When the scene prior to the transition you chose for edit-start point is dubbed:**

Enter a smaller value than 1.30.

**When the beginning of the scene stored in the computer is missed:**

Enter a larger value than 1.30.

- Factory preset is 1.30 sec.

### 4 DETERMINE VALUE

Click "OK".

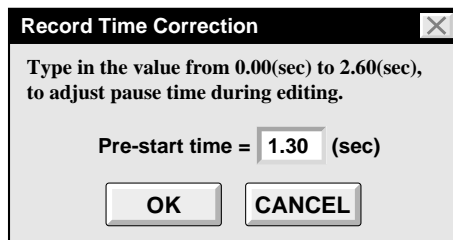
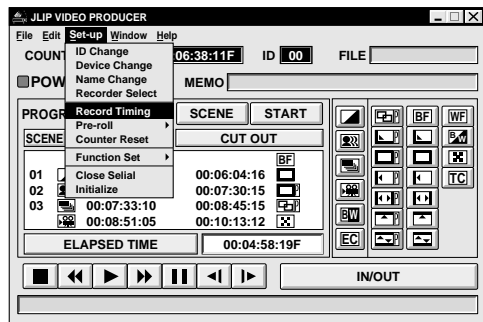
- This value is stored in the computer.

### 5 CHECK EDIT-START TIMING AGAIN

To check the corrected edit-start timing, dub the stored scenes and play them back.

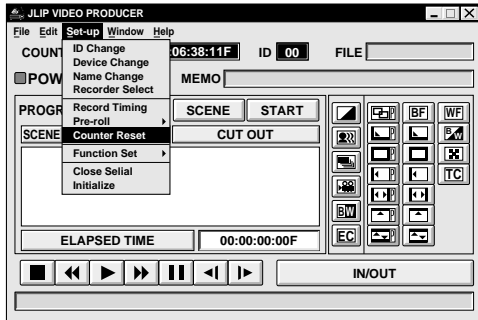
### NOTE:

*Even if the edit-start timing is adjusted, there can be a slight margin between the adjusted edit-start point and the dubbed scenes' one.*



## Counter reset

It is possible to reset the counter of the connected video device (VHS,VHS-C).



### 1 REWIND TAPE TO BEGINNING

### 2 RESET COUNTER

Click “Set-up” — “Counter Reset” on the JLIIP VIDEO PRODUCER window.

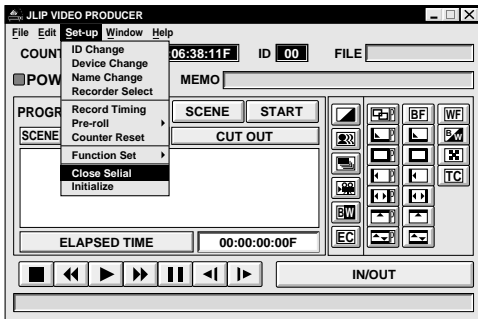
- The connected recording deck counter is reset.

### NOTE:

*The counter on digital camcorders cannot be reset.*

## When Using the Video Capture Software

The JLIIP Video Producer Software and JLIIP Video Capture Software cannot run simultaneously. When you want to run the JLIIP Video Capture Software, first select “Close Serial” from “Set-up” on the menu bar. To resume using the JLIIP Video Producer Software, click the “JLIIP” button in the JLIIP Video Capture Software and select “Open” from “File” on the JLIIP Video Producer Software’s menu bar.



MESSAGE	<ul style="list-style-type: none"> <li>● POSSIBLE CAUSE</li> <li>■ CORRECTIVE ACTION</li> </ul>
<p><b>Error -- This application will close.</b>  <b>Check devices -- Confirm that power is ON.</b></p>	<ul style="list-style-type: none"> <li>● The COM port used for the JLIP connector is not selected, or the COM port is selected but the connection is wrong.</li> <li>■ Check the connected COM port and select it on the "Serial Port Selection" screen (☞ pg. 48).</li> </ul>
<p><b>No devices detected to connect.</b>  <b>Power ON all devices in system.</b></p>	<ul style="list-style-type: none"> <li>● Power is not supplied or the connection is wrong.</li> <li>■ Connect the devices correctly and turn them on (☞ pg. 14, 15).</li> </ul>
<p><b>Communication error (&amp;H□ (number))</b>  <b>Check cable connection.</b></p>	<ul style="list-style-type: none"> <li>● Device is not turned on or cable is disconnected.</li> <li>■ Connect the device correctly and turn it on (☞ pg. 14, 15).</li> <li>■ If device was turned off and on again during operation, click "OK". All devices should function properly.</li> </ul>
<p><b>Select the device to control.</b></p>	<ul style="list-style-type: none"> <li>● The line where the name of the device to use appears is not clicked.</li> <li>■ Click on it and "OK" (☞ pg. 49).</li> </ul>
<p><b>No video cassette!!</b>  <b>Load a video cassette to ID □ (number).</b></p>	<ul style="list-style-type: none"> <li>● The video cassette is not loaded in the camcorder. When the video cassette is removed during operation, this message appears.</li> <li>■ Insert the video cassette into the camcorder.</li> </ul>
<p><b>Invalid entry in scene □ (number) (There is IN &gt; OUT condition). Correct the time or delete the scene.</b></p>	<ul style="list-style-type: none"> <li>● The value of the CUT OUT point is smaller than the CUT IN point's.</li> <li>■ Set the value of the CUT OUT point so that it is larger than the CUT IN point's (☞ pg. 52).</li> </ul>
<p><b>Select a number between 0 and 29.</b></p>	<ul style="list-style-type: none"> <li>● When correcting the CUT IN/OUT points, the value you set differs from the original by over 30 frames.</li> <li>■ Select integral number from 0 to 29 (☞ pg. 56).</li> </ul>
<p><b>This device has been selected as the player. Please select another device.</b></p>	<ul style="list-style-type: none"> <li>● You selected a device already designated as a player to be the recorder.</li> <li>■ Select another device capable of playback (☞ pg. 49).</li> </ul>
<p><b>This device has been selected as the recorder. Please select another device.</b></p>	<ul style="list-style-type: none"> <li>● You selected a device already designated as a recorder to be the player.</li> <li>■ Select another device capable of recording (☞ pg. 49).</li> </ul>
<p><b>Memory full -- 99 events maximum.</b></p>	<ul style="list-style-type: none"> <li>● You tried programming over 99 scenes in a file.</li> <li>■ First save the file currently opened then begin programming scenes using a new file (☞ pg. 55).</li> </ul>

The monitor displays of the application software illustrated in this manual may differ from those you are actually viewing depending on the operating environment of your computer.

MESSAGE	<ul style="list-style-type: none"> <li>● POSSIBLE CAUSE</li> <li>■ CORRECTIVE ACTION</li> </ul>
Enter correct value.	<ul style="list-style-type: none"> <li>● You entered an incorrect device ID number.</li> <li>■ Enter an ID number between 0 and 99 which is not being used by another device (☞ pg. 66).</li> </ul>
Your selection is not valid.	<ul style="list-style-type: none"> <li>● The value of the CUT OUT point is smaller than the CUT IN point's.</li> <li>■ Set the value of the CUT OUT point so that it is larger than the CUT IN point's (☞ pg. 56).</li> </ul>
Set a value from 0 to 59.	<ul style="list-style-type: none"> <li>● You entered a value over 60.</li> <li>■ Enter a value from 0 to 59 (☞ pg. 56, 57).</li> </ul>
Picture Wipe/Dissolve functions and Black & White Fader can not activate while Sepia or Monotone is used.	<ul style="list-style-type: none"> <li>● It is impossible to execute certain combination of P.AE/Effects and Picture Wipes/Dissolve.</li> <li>■ Cancel one of them or try another combination (☞ pg. 58).</li> </ul>
This effect can not activate on the in point of scene No. 01.	<ul style="list-style-type: none"> <li>● You tried to use a Picture Wipe/Dissolve (button with a "P") at scene "01".</li> <li>■ Use a Picture Wipe (button without a "P") at scene "01" (☞ pg. 59).</li> </ul>
Invalid frame number on drop frame counter.	<ul style="list-style-type: none"> <li>● Because the DV-format digital camcorder uses the drop frame system, inputting frame 00 and 01 is impossible.</li> <li>■ Input frame value other than 00 or 01 (☞ pg. 50).</li> </ul>

PROBLEM	<ul style="list-style-type: none"> <li>● POSSIBLE CAUSE</li> <li>■ CORRECTIVE ACTION</li> </ul>
Dubbing does not go as programmed, or the programmed playback displays an image similar to a Fader effect (black fader, mosaic fader, etc.).	<ul style="list-style-type: none"> <li>● If the CUT IN point is programmed at the beginning of a tape and programmed playback is to be continued, the video device stops and programmed playback is aborted.</li> <li>■ Program the CUT IN point so that the tape is forwarded/played back for approx. 20 to 30 sec. from the beginning of the first recorded scene on the tape (☞ pg. 52).</li> <li>● The counter may not be recognized due to dirt or abnormalities on the tape.</li> <li>■ When there are audio/video disturbances during playback or when the scene's counter acts abnormally, delete the scene from the programmed playback or correct its CUT IN point (☞ pg. 56).</li> </ul>
Dubbing is impossible using a VCR as a player.	<ul style="list-style-type: none"> <li>● When you click the "START" button using a JVC VCR equipped with JLIP connector and High-Speed Search function as a player, dubbing may be impossible.</li> <li>■ Open the menu bar and click "Set-up" — "Pre-roll" — "Long", then click the "START" button again.</li> </ul>

## JLIP VIDEO CAPTURE DOCKING STATION

<b>Power consumption</b>	: 9 W (when charging)
<b>Connectors</b>	
<b>S-Video (S2 output)</b>	: Output Y : 1.0 Vp-p, 75 ohms C : 0.29 Vp-p, 75 ohms
<b>Video</b>	: Output 1.0 Vp-p, 75 ohms (pin jack) (VIDEO output connector)
<b>Audio</b>	: Output -8 dB, 1 kilohm (pin jack)
<b>JLIP (x 2)</b>	: 3.5 mm diameter, 4-pole, mini-head jack (compatible with EIAJ RC-5325 plug)
<b>Digital</b>	: Mini DIN 8-pin
<b>Editing connector</b>	: 3.5 mm diameter, 2-pole
<b>DC output</b>	: 5 V DC
<b>Captured image sizes</b>	: 640 x 480 pixels, 80 x 60 pixels
<b>Operating temperatures</b>	: 5 to 30° C
<b>Operating humidity</b>	: 35 to 80%
<b>Dimensions</b>	: 101.5W x 46.5H x 141D mm
<b>Weight</b>	: Approx. 280 g
<b>Power supply</b>	: 6.3 V DC (when using the AC Power Adapter/ Charger AA-V90U)

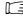
*E. & O. E. Design and Specifications subject to change without notice.*




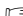
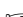
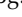


**A**

Arrange Index .....  pg. 35  
 Automatic Capture (AUTO) .....  pg. 30, 32





**B**

Bitmap .....  pg. 28, 33



**C**

Capture Mode .....  pg. 33  
 Change ID .....  pg. 35, 66  
 COM Port .....  pg. 22, 48  
 Counter reset .....  pg. 34  
 Counter Value Change .....  pg. 34  
 Create New Folder .....  pg. 36


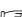

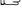
**D**

Delete Index Image  
   and Full Image .....  pg. 35  
 Desktop Window .....  pg. 24, 50, 60  
 Device Selection .....  pg. 23  
 Dubbing .....  pg. 54


**E**

Edit Menu .....  pg. 26  
 Exit (Close) .....  pg. 21


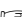

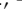



**F**

Field Picture .....  pg. 33  
 File Menu .....  pg. 26  
 Frame Picture .....  pg. 33  
 Full image data .....  pg. 25

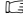
**H**

Help Menu .....  pg. 27, 51

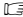
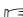
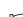
**I**

Index image .....  pg. 25, 30, 32  
 Index image data .....  pg. 25  
 Initialize .....  pg. 22, 48  
 Input button .....  pg. 24  
 Install .....  pg. 19, 47  
 Interval Capture .....  pg. 32  
 IRQ .....  pg. 41

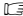
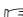

**J**

JPEG .....  pg. 33

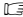
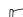
**M**

Main Window .....  pg. 24  
 Memory button .....  pg. 24  
 Menu bar .....  pg. 24, 50

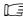
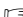
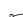
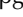
**O**

Open JLIP (jlp) File .....  pg. 38  
 Open Index .....  pg. 37  
 Operate VCR .....  pg. 27, 51

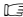
**P**

Picture Format .....  pg. 33  
 Program Capture .....  pg. 30, 31



**S**

Save As JLIP (jlp) File .....  pg. 39  
 Save Image As .....  pg. 37  
 Setup Menu .....  pg. 27, 29  
 Step by Step Capture .....  pg. 29

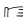
**T**

Transfer Rate .....  pg. 22

**V**

Video Capture .....  pg. 28 – 32  
 Video Printer .....  pg. 62 – 65

**W**

Window Menu .....  pg. 24

**JVC**

**JVC COMPANY OF AMERICA**  
DIVISION OF US JVC CORP.

41 Slater Drive, Elmwood Park, N.J. 07407

**JVC CANADA INC.**

21 Finchdene Square, Scarborough Ontario M1X 1A7